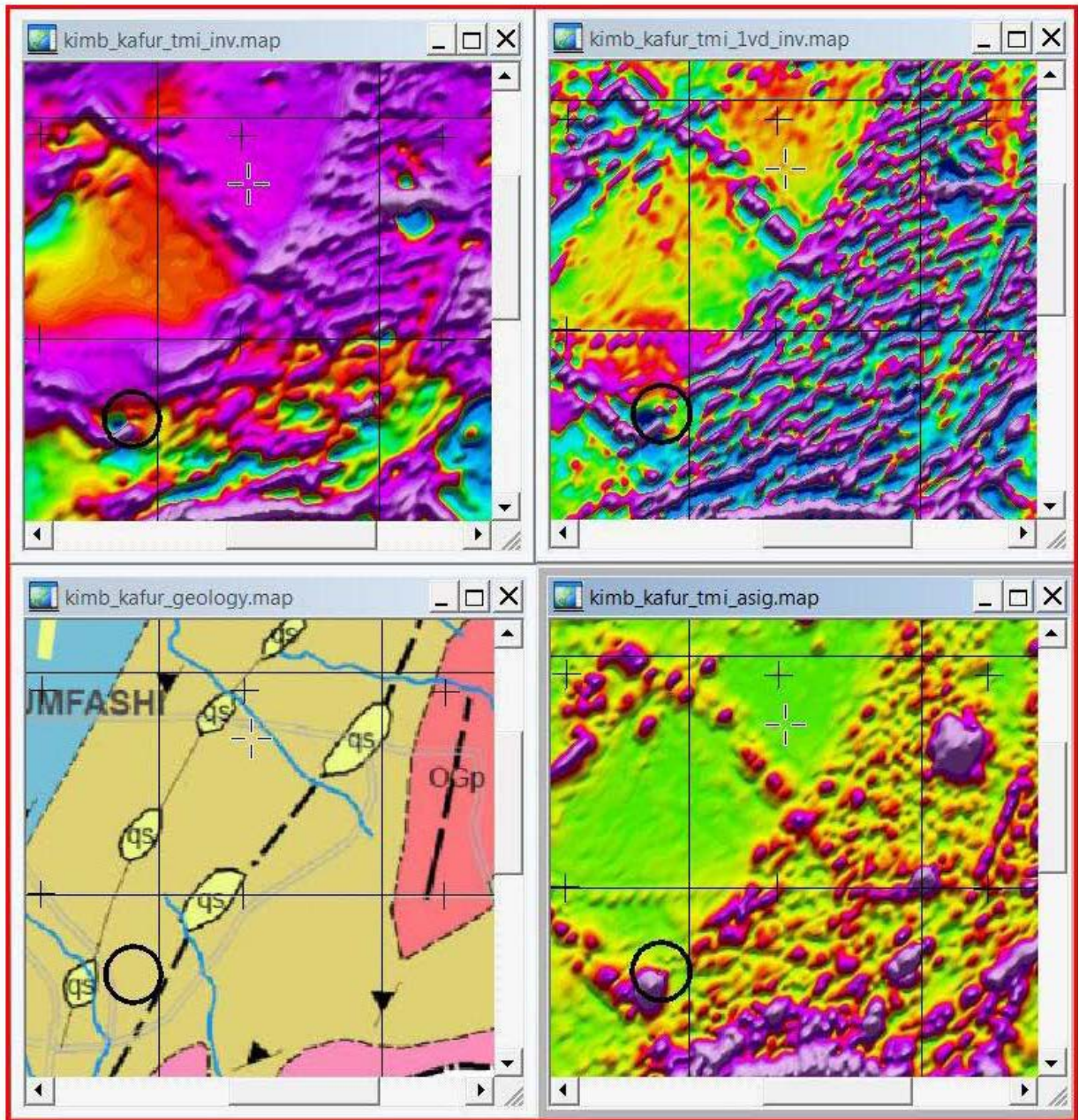
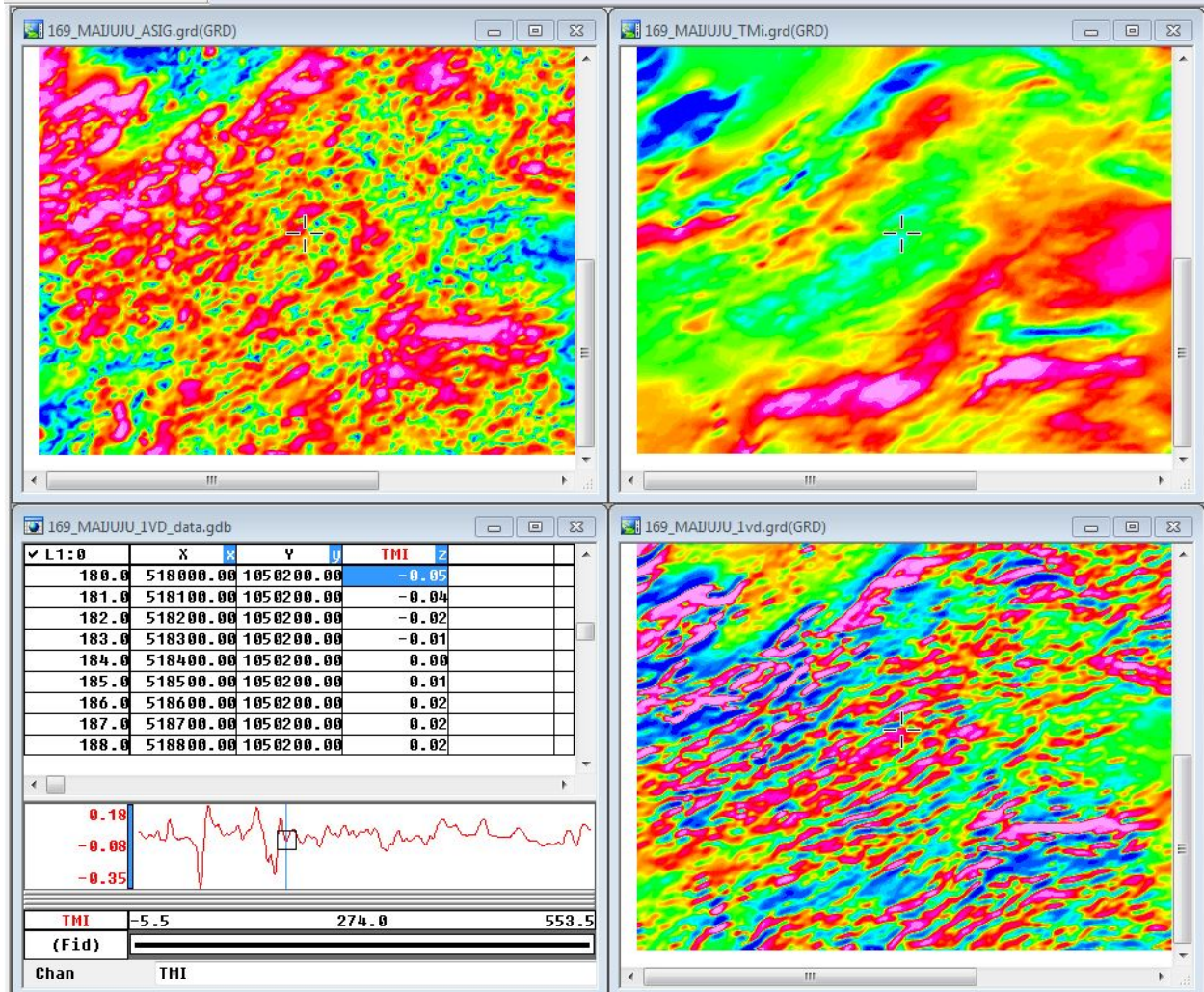


## NGSA WEBSITE

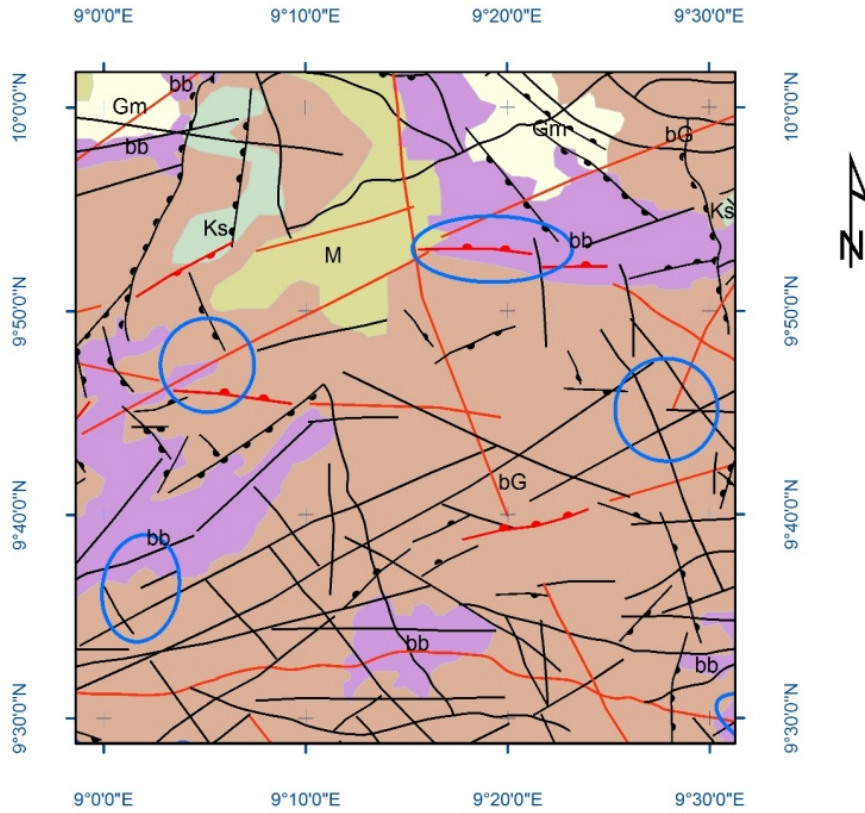


***Geophysical interpretation of kimberlite target in circle (SW corner). Another target at the north east corner of the ANSIG map.***



*Dynamic linking of data, profile, TMI grid and its derivatives*

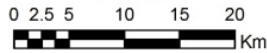
# Geophysical Interpretation Sheet169 ( Maijuju)



## Legend

### Structures

- .....▲▲▲ Benue Trough Edge
- "basin edge" as defined by radiometric data
- Fault
- Normal Fault
- Regional Fault
- Regional Normal Fault



### Lithology

- Quaternary to Recent**
- Sed Undifferentiated sediments
- Mesozoic**
- Tertiary to Recent Volcanics*
- bb Older basalt
- Cretaceous**
- Ks Sediments and undifferentiated shales and sandstones
- Precambrian to Cambrian**
- Older Granitoids (Pan African)*
- OGe Medium to coarse-grained biotite granite
- Migmatite - Gneiss Complex**
- Gm Migmatitic gneiss
- M Migmatite
- bG Banded gneiss

"buried" indicates formation at significant depth beneath sedimentary or metamorphic cover rocks

### Boundaries

- Phase II Airborne Survey Boundary
- Targets