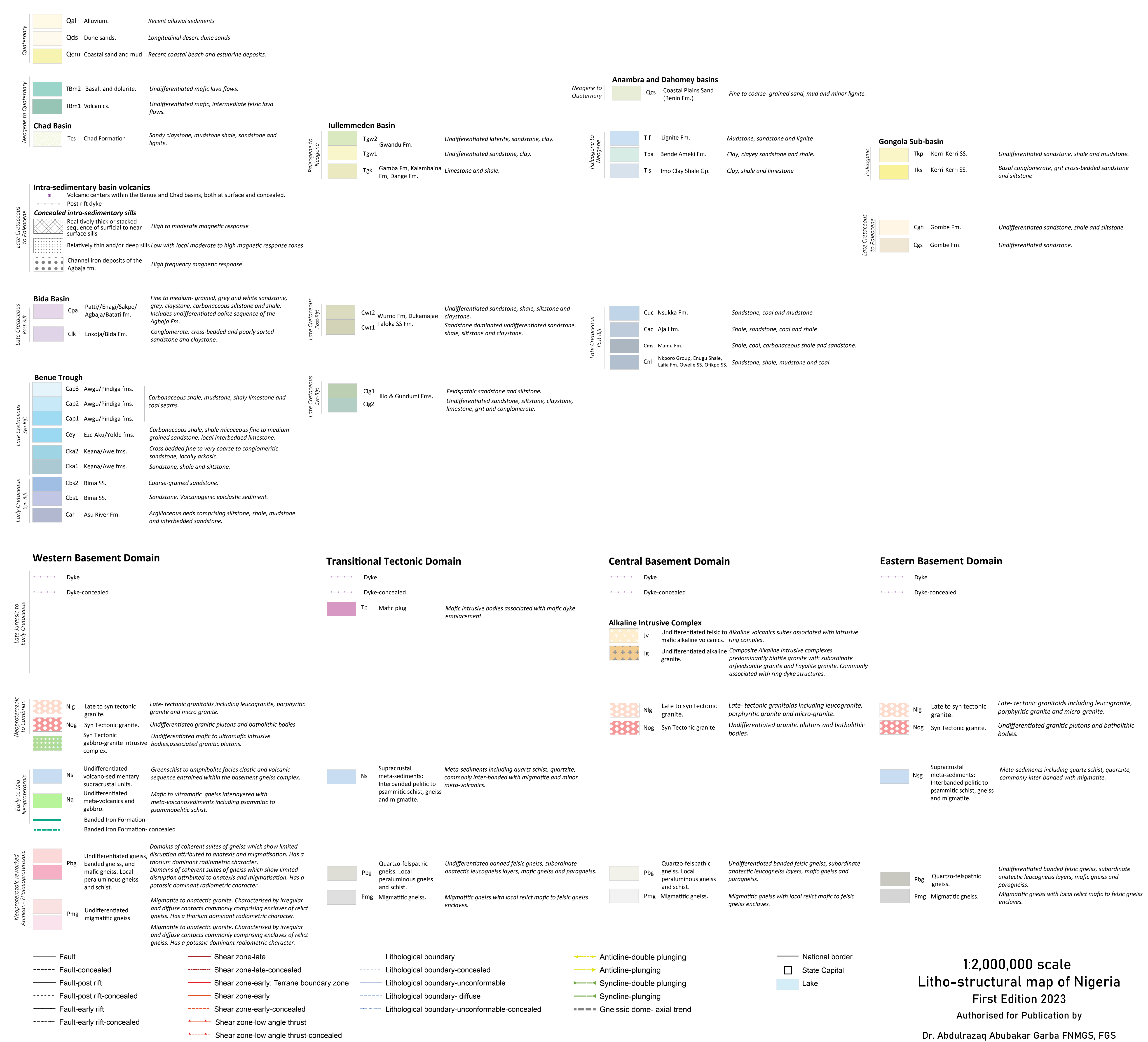
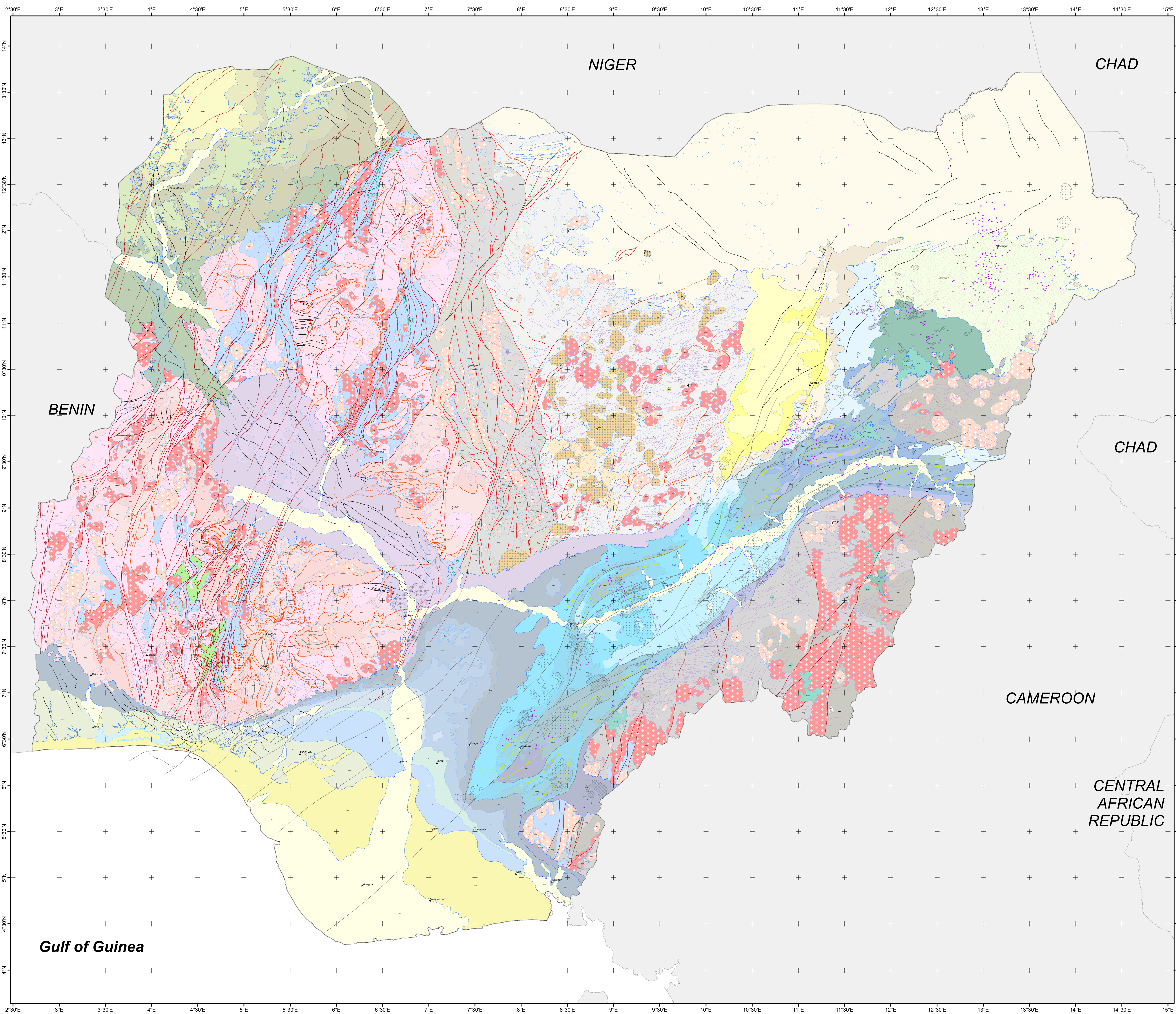
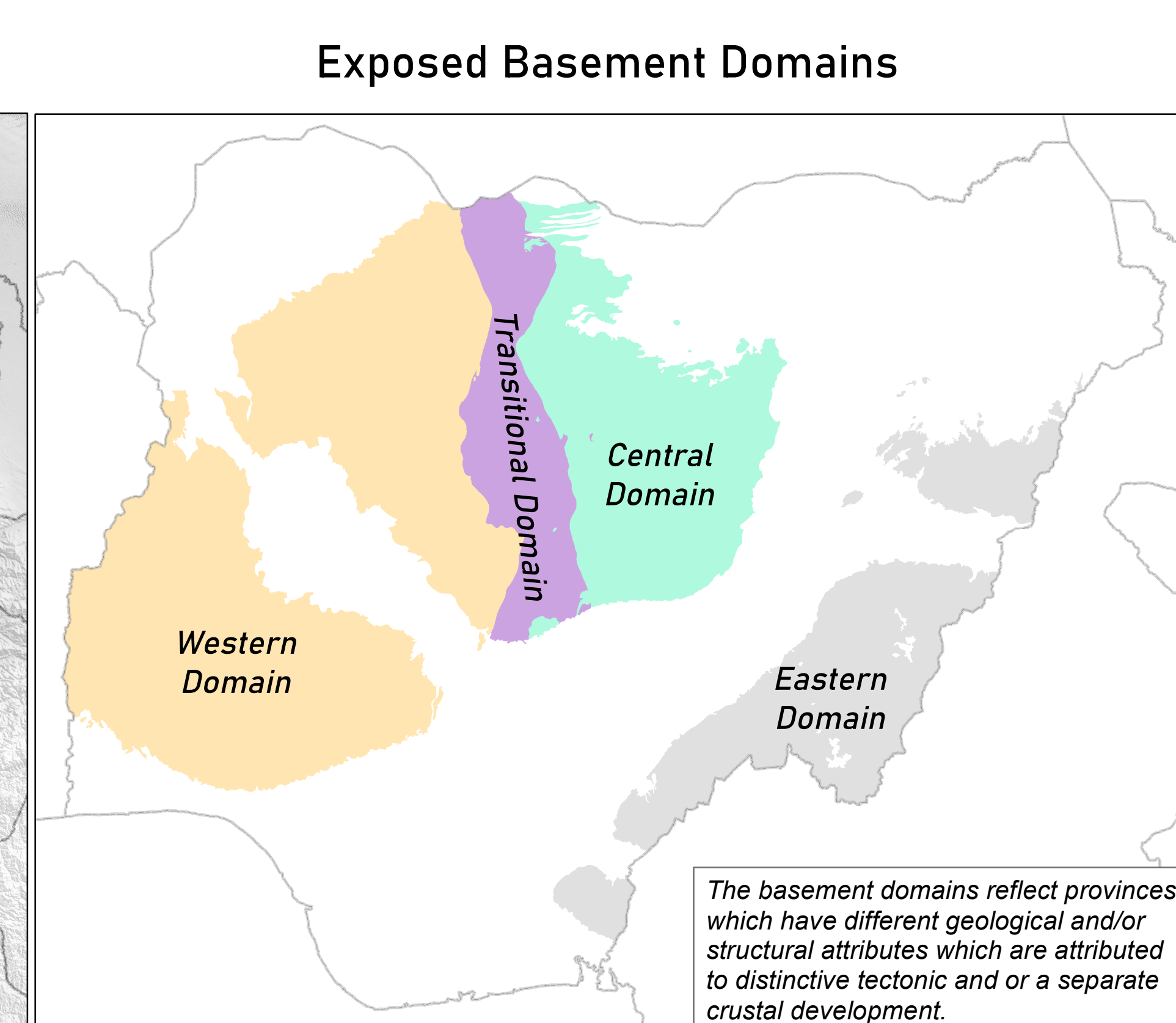
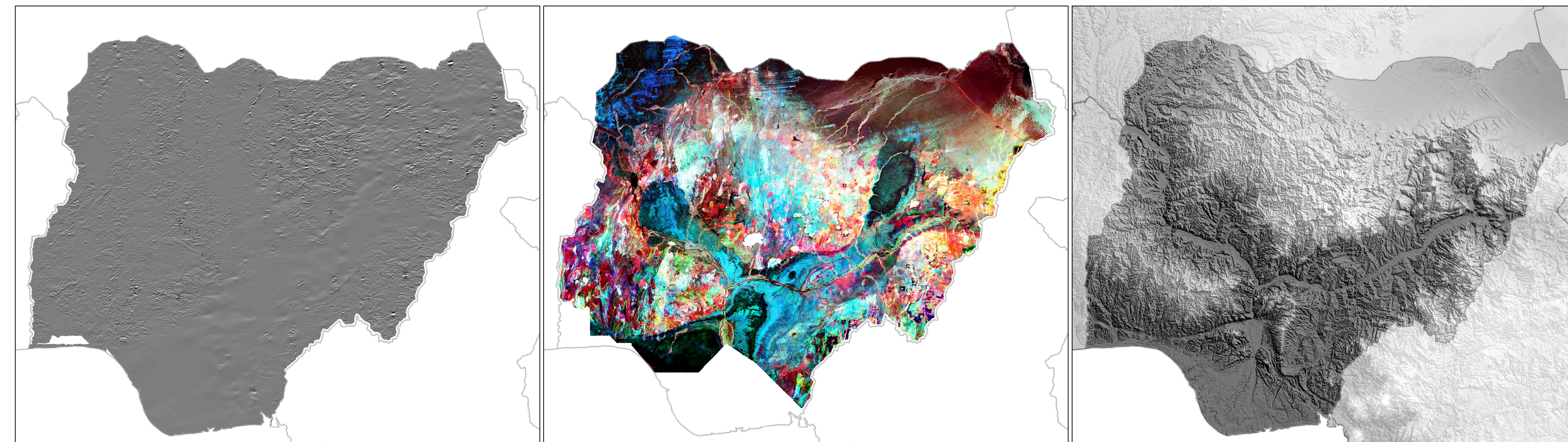


LITHO-STRUCTURAL MAP OF NIGERIA

Map Explanation



Interpretation base: National magnetic data: first vertical derivative of RTP data. Interpretation base: National radiometric data: Ternary colour image where RGB=K,Th,U channels.. Interpretation base: Shuttle Radar Topography Mission (SRTM) data.



Nigeria Location Reference

**1:2,000,000 scale
Litho-structural map of Nigeria
First Edition 2023
Authorised for Publication by
Dr. Abdulrazaq Abubakar Garba FNMGS, FGS
Director General, Nigerian Geological Survey Agency**

The Nigerian Geological Survey Agency (NGSA), being a repository for geoscientific knowledge and information geared towards wealth creation and economic development of the country, has undertaken to produce a National 1:2 million scale Litho-Structural map of Nigeria which brings together the emerging knowledge of the structural and tectonic development which provides a new basis for understanding the mineral systems in the country.

This is a first edition map product which brings into focus the structural architecture of the Nigerian basement and basin successions. This map product has utilized the National airborne magnetic and radiometric datasets acquired between 2005 and 2010 to build and constrain the structural geometry and lithological associations, leveraging on the previous 1:2 million scale geological map editions.

Map interpretation and layout production was completed by Dr Warwick Crowe and the NGSA mapping team under the direction of Dr. Abdulrazaq A. Garba (Director General).

References
Adeoti et al., 2016; Adeoti and Okonkwo, 2017; Allix et al., 1981; Amajor, 1984; Benkheil, 1989; Bruguiere et al., 1994; Cabry and Boessé, 2001; Dada et al., 1993; Dada, 2008; Danbatta 2008a; Danbatta 2008b; Dessauvage, 1975; Dike, 2002; Dicken et al., 1991; Ekwueme and Kalsbeek 2014; Ekwueme and Kroner 1998; Ekwueme and Kroner 2006; Ferré et al., 1996; Ferré et al., 1998; Ferré et al., 2002; Ferré and Cabry 2006; Fitches et al., 1985; Frimmel et al., 2011; Goodenough et al., 2014; Igo et al., 1998; Kogbe, 1974; Kogbe 1989; Kogbe and Wozny, 1989; Kroner et al., 2001; Moody, 1997; Nwachukwu, 1972; Nwajide, 2013; Obaje 2009; Obaje et al., 2013; Offodile, 1976; Okosun 1999; Rahaman et al., 1991; Reymont, 1965; Reymont and Barbers 1956; Salawu, N.B. et al., 2021; Turner 1983; Woakes et al., 1987; Wright et al., 1985; Zaborski, 1997.

FEDERAL REPUBLIC OF NIGERIA

Scale: 0 25 50 100 150 200 Kilometers
Geographic Coordinate System WGS 1984
GN
MN 0.12°W