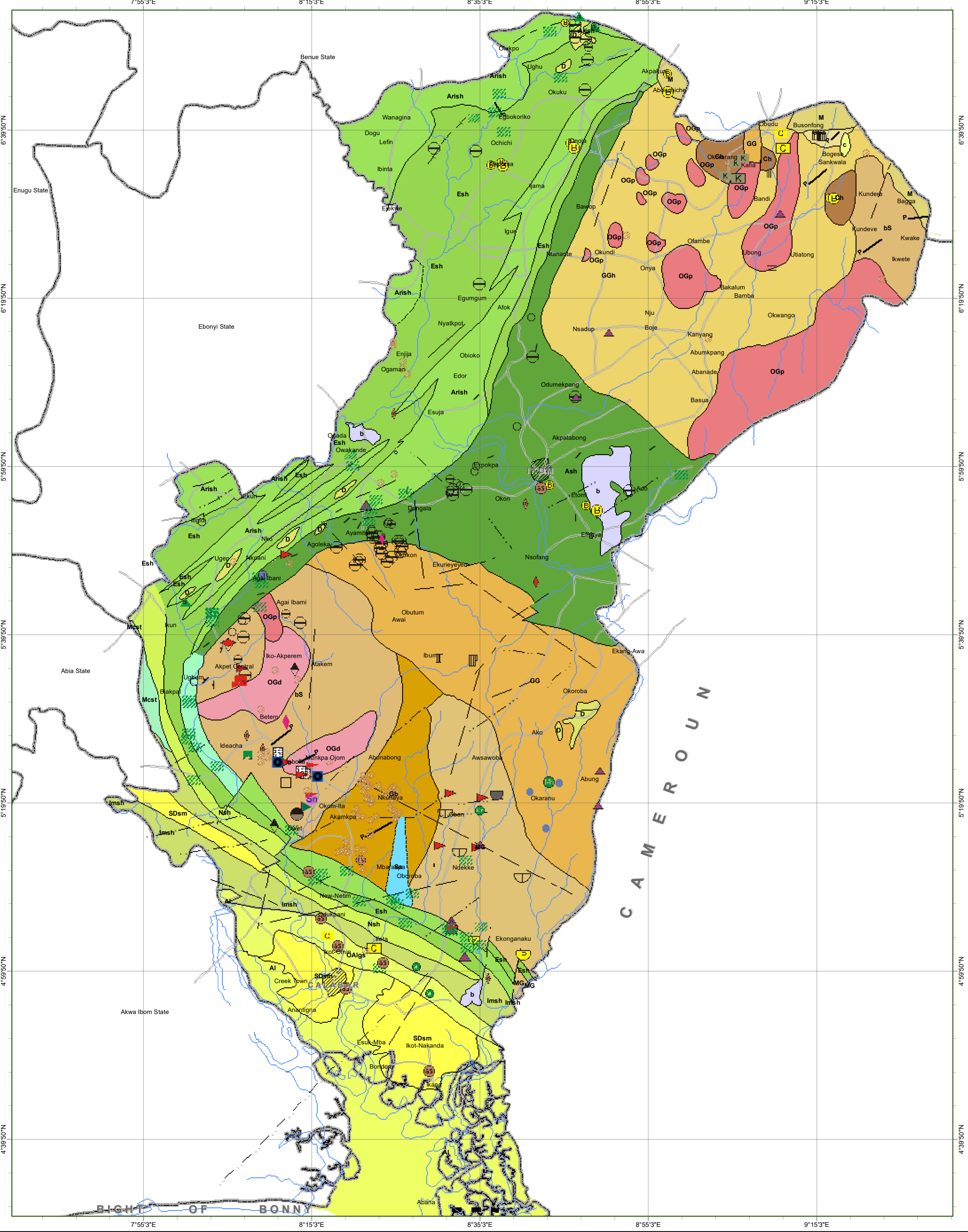
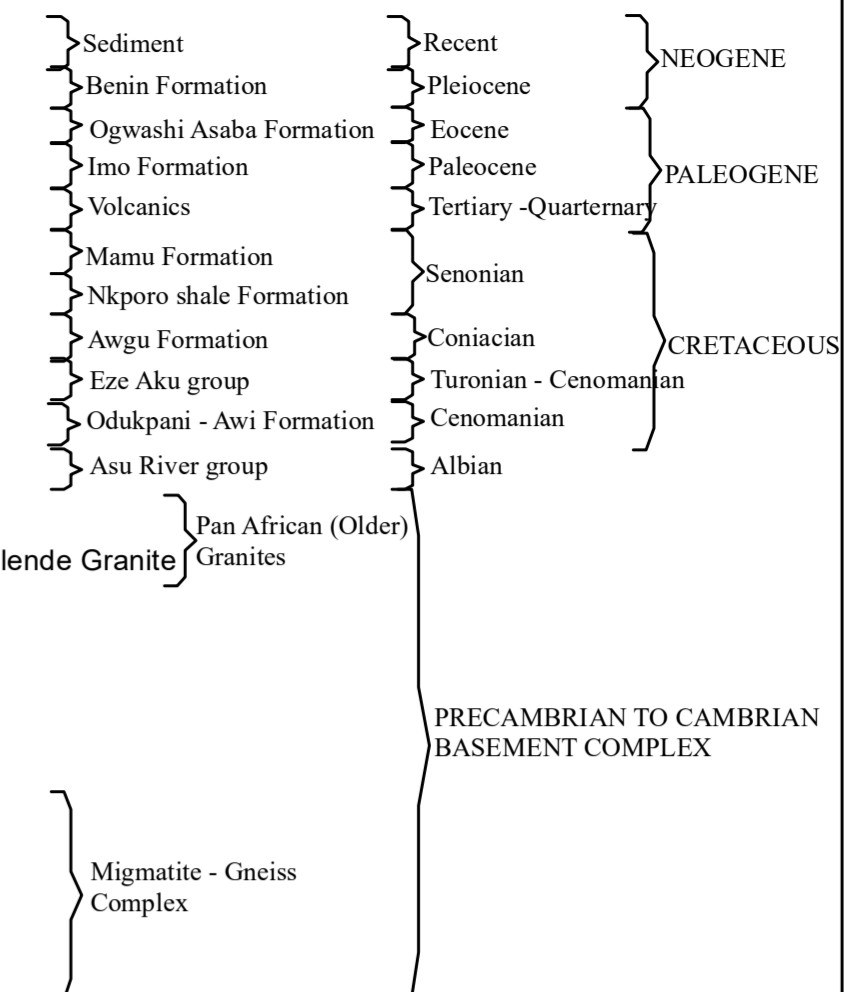


# GEOLOGICAL AND MINERAL RESOURCES MAP OF CROSS - RIVER STATE, NIGERIA



## EXPLANATIONS

- Al Alluvium
  - SDsm Sands Clay and Swamp
  - OAlgs Lignite, Claystone and Shale
  - Imsh Clay and Shale with Limestone Intercallation
  - Basalt
  - Mcs Coal, Shale, Sandstone and Mudstone
  - Nsh Shale, Mudstone and Marl
  - Nsh Shale and Limestone with Sandstone Intercallation
  - ESh Shale, Limestone and Sandstone
  - Mls Limestone and shale
  - ASh Sandstone and Siltstone
  - ASh Shale, Limestone and Sandstone
  - OGd Biotite and Biotite hornblende Granodiorite
  - OGp Porphyritic Granite/Coarse Porphyritic Biotite and Biotite hornblende Granite
  - Ch Charnockitic Rocks
  - bs Biotite, Garnet, Gneiss and Schist
  - AS Amphibole Schist, amphibolite
  - D Dolerite
  - GG Granite Gneiss
  - M Migmatite
  - GH Hornblende Granite Gneiss
  - B Biotite Gneiss
  - MG Migmatitic Gneiss
  - P Pegmatite
- 
- Geological boundary definite
  - - - Geological Boundary Approximate
  - Major Faults
  - +— Synclinal axis
  - - - Faults inferred from aeromagnetic survey map
  - ▬ ISD bars
  - 10 Strike and dip of bedding
  - 2 Strike and dip of foliation
- 
- Baryte
  - ▨ Limestone
  - ▨ Clay / Pottery clay
  - ▨ kaolin
  - Mica
  - ▨ Graphite
  - Manganese
  - Pyrite
  - Rutile
  - ▨ Tantalite
  - ▨ Cassiterite
  - ▨ Ilmenite
  - ▨ Monazite
  - ▨ Corundum
  - ▨ Tourmaline
  - Amethyst
  - Granite
- 
- INDUSTRIAL MINERALS
  - METALLIC MINERALS
  - SEMI - PRECIOUS MINERALS
- 
- Roads
  - River
- 
- ### Cross River (Commodity -2022)
- Ambligonite
  - Amethyst
  - Antophyllite
  - Baryte
  - Birlite
  - Feldspar
  - Galena
  - Granites
  - Graphite
  - Iron Ore
  - Kaolin
  - Lepidolite
  - Limestone
  - Manganese
  - Marble
  - Sand
  - Tin
  - Tourmaline
  - Uranium



PUBLISHED BY THE  
 AUTHORITY OF THE FEDERAL REPUBLIC OF NIGERIA  
 ABDULRAZAQ A. GARBA *PhD., FGS, FNMS*  
 Director General

