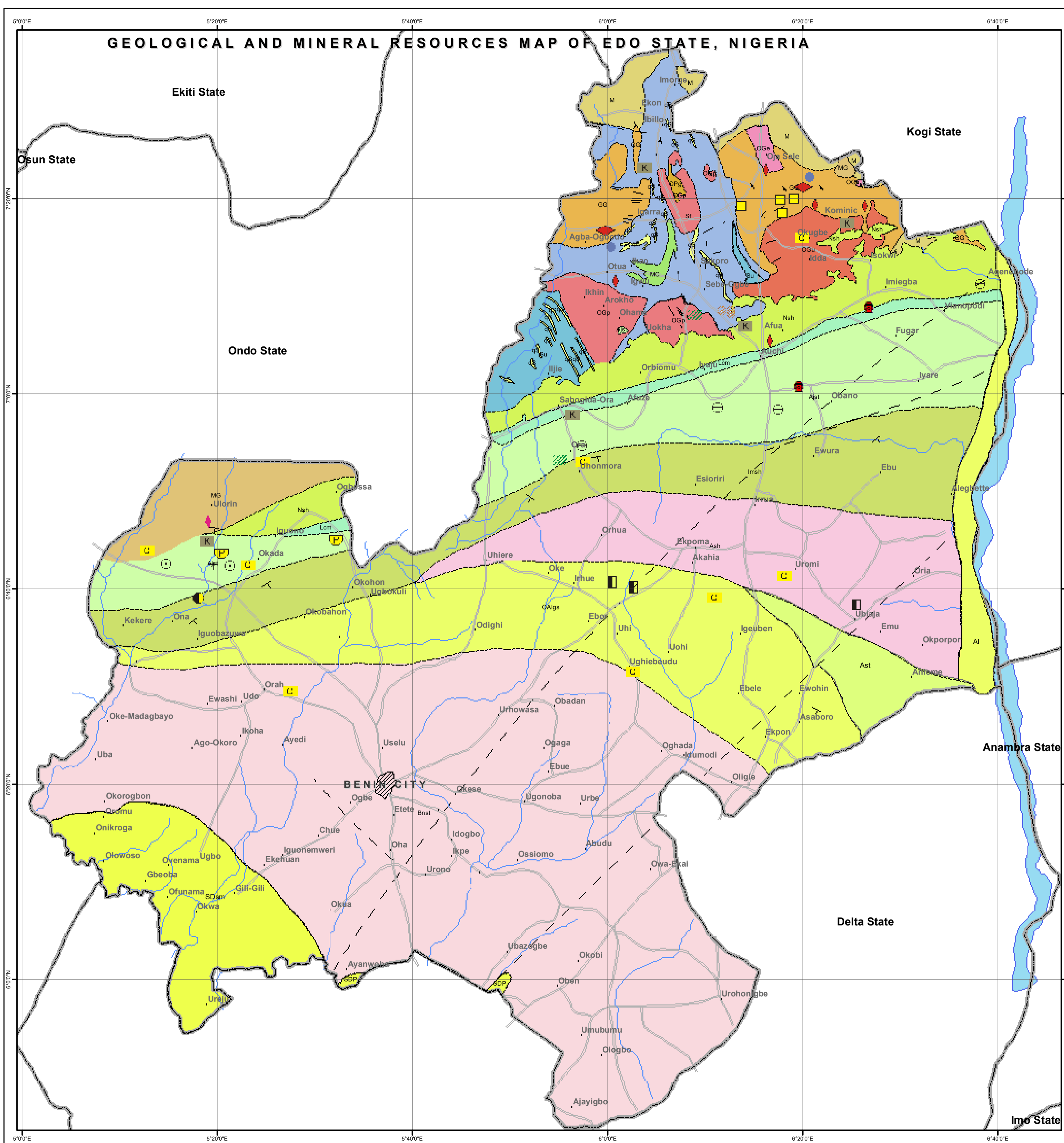


GEOLOGICAL AND MINERAL RESOURCES MAP OF EDO STATE, NIGERIA



EXPLANATIONS

- | | | | | |
|-------|---|-----------------------|-------------------------|---|
| Al | Sand clay and swamp | Benin Formation | Pliocene | NEOGENE |
| SDP | Sand and mud | Owguashi - Asaba Fm. | Pleistocene - Oligocene | |
| CPs | Sand, gravel and clay | Bende Ameki Formation | Oligocene Miocene | PALEOGENE |
| OAlgs | Lignite, sandstone and shale | Imo Formation | Upper Eocene | |
| Ash | Clay, clayey sandstone and shale | Ajali Formation | Eocene | CRETACEOUS |
| IMsh | Shale, limestone and sandstone | Mamu Formation | Maestrichtian | |
| Ast | Sandstone, coal and shale | Nkporo Group | Upper Senonian | PRE-CAMBRIAN TO CAMBRIAN CRYSTALLINE BASEMENT COMPLEX |
| MCst | Coal, shale and sandstone | Pan - African | Mid Senonian | |
| Nsh | Shale and mudstone | Older Granites | | |
| OGp | Coarse grained granite | | | |
| OGu | Undifferentiated Older granite mainly porphyritic granite | | | |
| Qs | Silicified sheared rocks | | | |
| mC | Meta - conglomerate biotite, garnet gneiss and schist | | | |
| Sm | Fine grained flaggy quartzite and quartz schist | | | |
| Su | Undifferentiated schist | | | |
| GG | Granite gneiss | | | |
| AI | Porphyroblastic gneiss | | | |
| MG | Migmatitic granite gneiss | | | |
| M | Migmatite | | | |
-
- | | |
|-----|---------------------------------|
| --- | Geological boundary approximate |
| --- | Structure trend lines |
| - | Fault inferred |
| ↖ | Strike and dip of foliation |
| ↑ | Strike and dip of bedding |
-
- | | | |
|---|-----------|---------------------|
| K | Kaolin | INDUSTRIAL MINERALS |
| ⊖ | Gypsum | |
| C | Clay | |
| ⊞ | Limestone | |
| ◆ | Marble | METALLIC MINERAL |
| ⬢ | Feldspar | |
| ● | Mica | PRECIOUS MINERAL |
| P | Pyrite | |
| ⬢ | Gold | ENERGY MINERALS |
| ⊞ | Lignite | |
| ○ | Bitumen | |
-
- | | |
|---|--------|
| — | Roads |
| — | Rivers |
-
- ### NEW COMMODITY
- | | |
|---|-------------------|
| ⬢ | GOLD |
| ◆ | AMETHYST |
| ⬢ | BENTONITIC CLAY |
| C | CLAY |
| ⬢ | CLAY (KAOLINITIC) |
| ⊞ | DOLOMITE |
| ⊞ | LIGNITE |
| ◆ | MARBLE |



PUBLISHED BY THE
 AUTHORITY OF THE FEDERAL REPUBLIC OF NIGERIA
 ABDULRAZAQ A. GARBA *PhD., FGS, FNMGS*
 Director General

