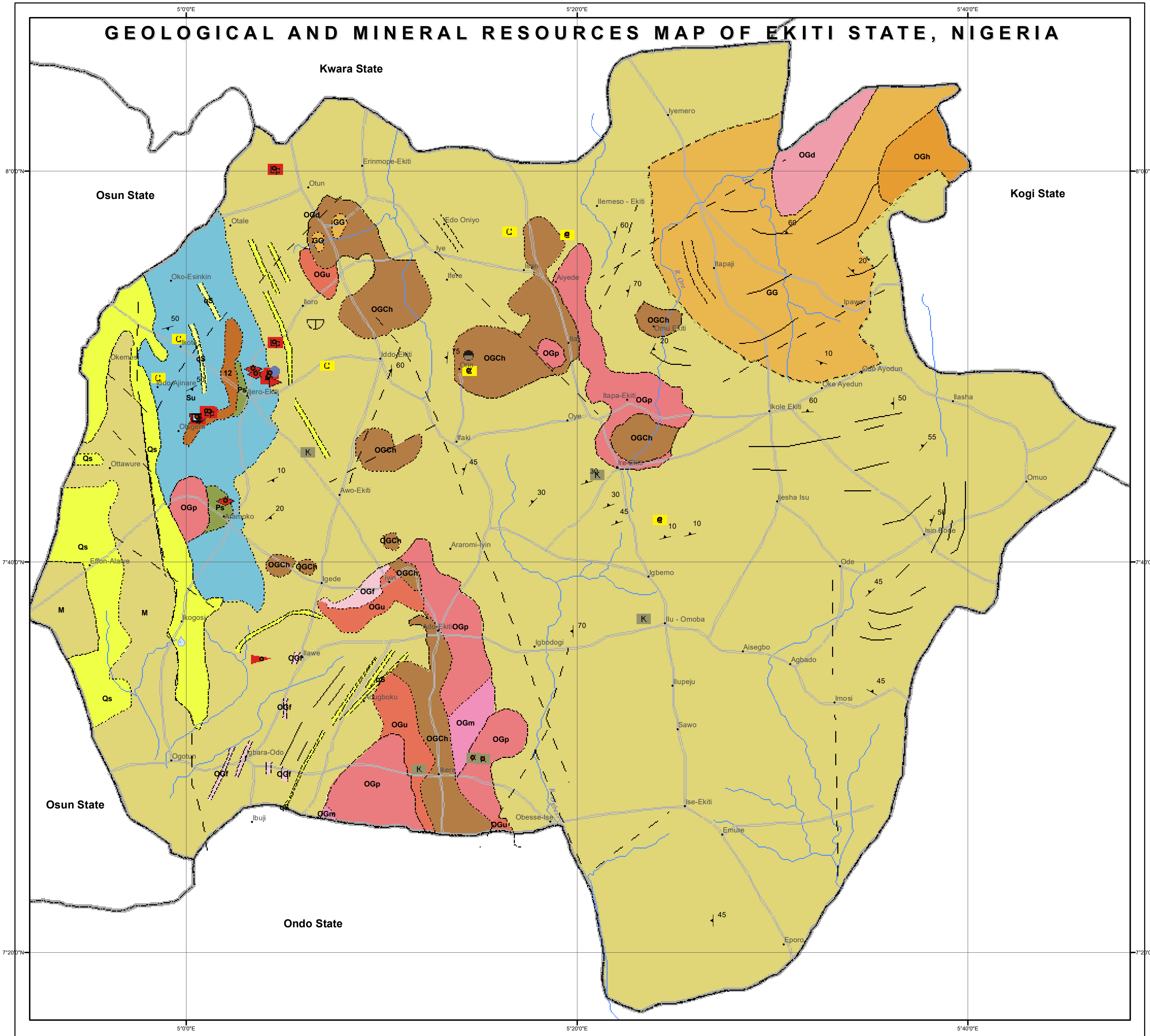


GEOLOGICAL AND MINERAL RESOURCES MAP OF EKITI STATE, NIGERIA



EXPLANATIONS

- OGp Porphyritic Granite/Coarse Porphyritic Biotite and Biotite hornblende granite
- OGu Undifferentiated Porphyritic Granite and Granite, Gneiss older Granite and Migmatite
- OGf Fine grained biotite Granite
- OGm Medium - coarse grained biotite granite
- OGd Biotite and biotite hornblende granodiorite
- OGCh Charnockite and Charnockitic rocks
- e Meta volcanics /Meta Sedimentary including pebbly schist
- Su Undifferentiated Schist including Phyllite and Amphibolitic Layers
- Qs Quartzite, Massive and Schistos, also occurring as ridges
- Ps Schist interlayered with Pegmatite
- M Migmatite
- GG Granite Gneiss
- qS Silicified Sheared Rocks, Large quartz veins

Pan - African Older Granite series

Metasedimentary / Meta - igneous Rocks

Migmatite - Gneiss Complex

Pre-Cambrian to Cambrian Crystalline Basement Complex

- Geological Boundary Transitional
- Geological Boundary Inferred
- Geological Boundary Approximate
- faults
- ↑ Strike of vertical foliation
- ↘ Strike and dip of foliation

- C Clay / Pottery clay
 - Bauxitic Clay
 - K Kaolin/Kaolinitic Clay
 - Mica
 - ⊂ Cassiterite, Tantalite, Columbite
 - ▲ Tourmaline, Aquamarine
 - ⊕ Spring Water
- INDUSTRIAL MINERALS
- METALLIC / SPECIALITY MINERAL
- SEMI - PRECIOUS MINERAL

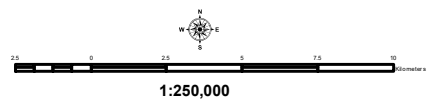
- State boundary
- Roads
- Rivers.

Commodity (2022)

- ⊂ Cassiterite
- C Clay
- ▲ Feldspar
- K Kaolin
- Lepidolite
- ⊂ Tantalum
- ▲ Tourmaline



PUBLISHED BY THE
 AUTHORITY OF THE FEDERAL REPUBLIC OF NIGERIA
 ABDULRAZAQ A. GARBA Ph.D., FGS, FNMGS
 Director General



Copyright reserved, Nigerian Geological Survey Agency 2011