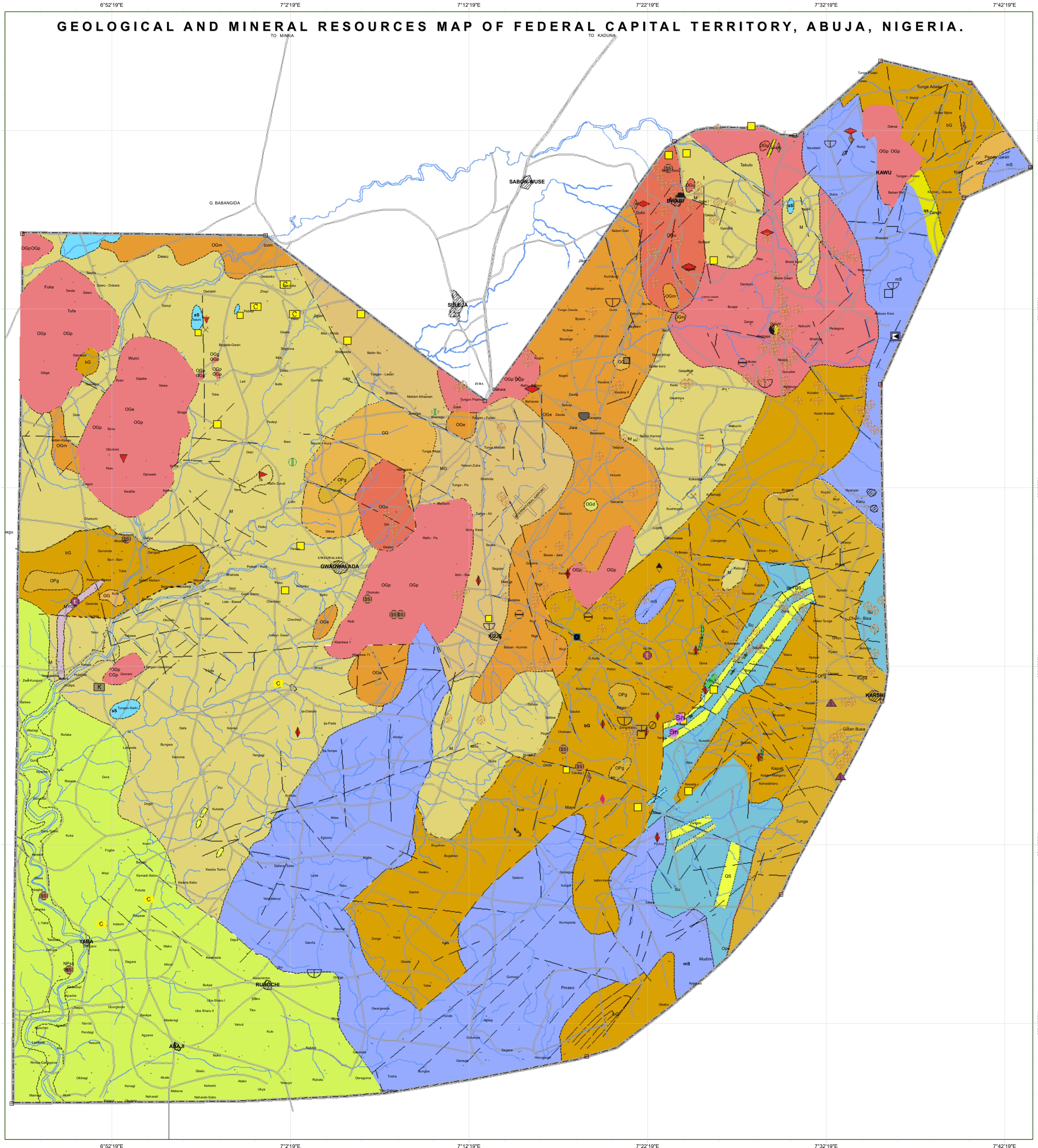


GEOLOGICAL AND MINERAL RESOURCES MAP OF FEDERAL CAPITAL TERRITORY, ABUJA, NIGERIA.



EXPLANATIONS

AI	Sandstone	Nupe Formation	Lower Turonian - Maastrichtian	CRETACEOUS
MYGp	Granite porphyry			
d	Dolomite		Younger Granite	JURASSIC
OG4	Biotite and biotite - hornblende granodiorite, quartz-diorite		Pan African Older Granite	
OGP	Coarse porphyrite biotite and biotite hornblende granite			
OGM	Medium - grained biotite and biotite - hornblende granite			
OPg	Porphyroblastic gneiss			
OGG	Undifferentiated older granite, mainly porphyroblastic granite and migmatite			
M	Marble			
Qz	Quartzite, silicified shear zone, large quartz vein, quartzitic schist			
MS	Muscovite and quartz-muscovite-schist			
Su	Undifferentiated schist, including some gneiss			
Ts	Talc-Tremolite-Actinolite schist			
As	Amphibolite- schist and amphibolite			
GG	Granite Gneiss			
MB	Biotite, biotite - hornblende gneiss finely bonded			
MG	Migmatitic gneiss			
M	Migmatite			
			Meta Sedimentary / Meta Volcanic Complex	PRE-CAMBRIAN TO CAMBRIAN BASEMENT COMPLEX
			Migmatite - Gneiss complex	

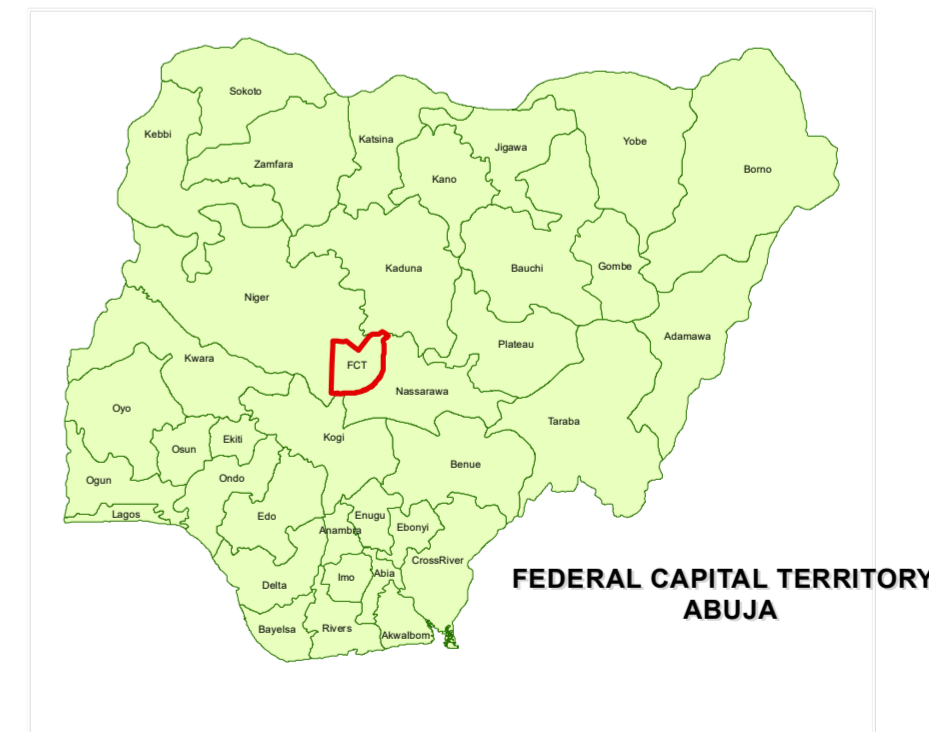
Commodity

Amethyst	Aquamarine	Baryte	Bauxite	Bentonite	Beryl	Cassiterite	Clay	Columbite	Feldspar	Gold	Granite	Iron	Kaolin - kaolinitic Clay	Kyanite	Lead - Zinc	Marble	Sand	Talc	Tantalite	Tin	Zircon
----------	------------	--------	---------	-----------	-------	-------------	------	-----------	----------	------	---------	------	--------------------------	---------	-------------	--------	------	------	-----------	-----	--------

Geological boundary approximate	Geological boundary transitional	Geological boundary inferred	Structural trend lines	Fault fracture inferred	Fault movement	Mines					
Feldspar	Clay / Pottery clay	Kyanite	Gravel	Marble	Muscovite	Tantalite	Lead - Zinc	Cassiterite	Gold	Tourmaline	Quartz / Amethyst
INDUSTRIAL MINERALS											
METALLIC MINERALS											
PRECIOUS MINERALS											
SEMI PRECIOUS MINERALS											

MAP HISTORY

Systematic Geological mapping on the scale of 1 : 100,000 by Geological Survey Department, with periodic field checks (1972 - 1975) and (1994 - 1995).
 2004: Detailed field mapping of the mineralised areas of the state.
 Data compilation by: N.G.S.A. office
 Cartographic reproduction by: Cartographic Unit
 Supervised by: Mrs. B. O. Fasola (Principal Carto Officer I)
 Digital Production by Map Production Team, Coordinated by Mr. P.O. Olyside (Special Adviser to Director General on Map Production)



PUBLISHED BY THE
 AUTHORITY OF THE FEDERAL REPUBLIC OF NIGERIA
 DR. ABDULRAZAQ A. GARBA
 Director General