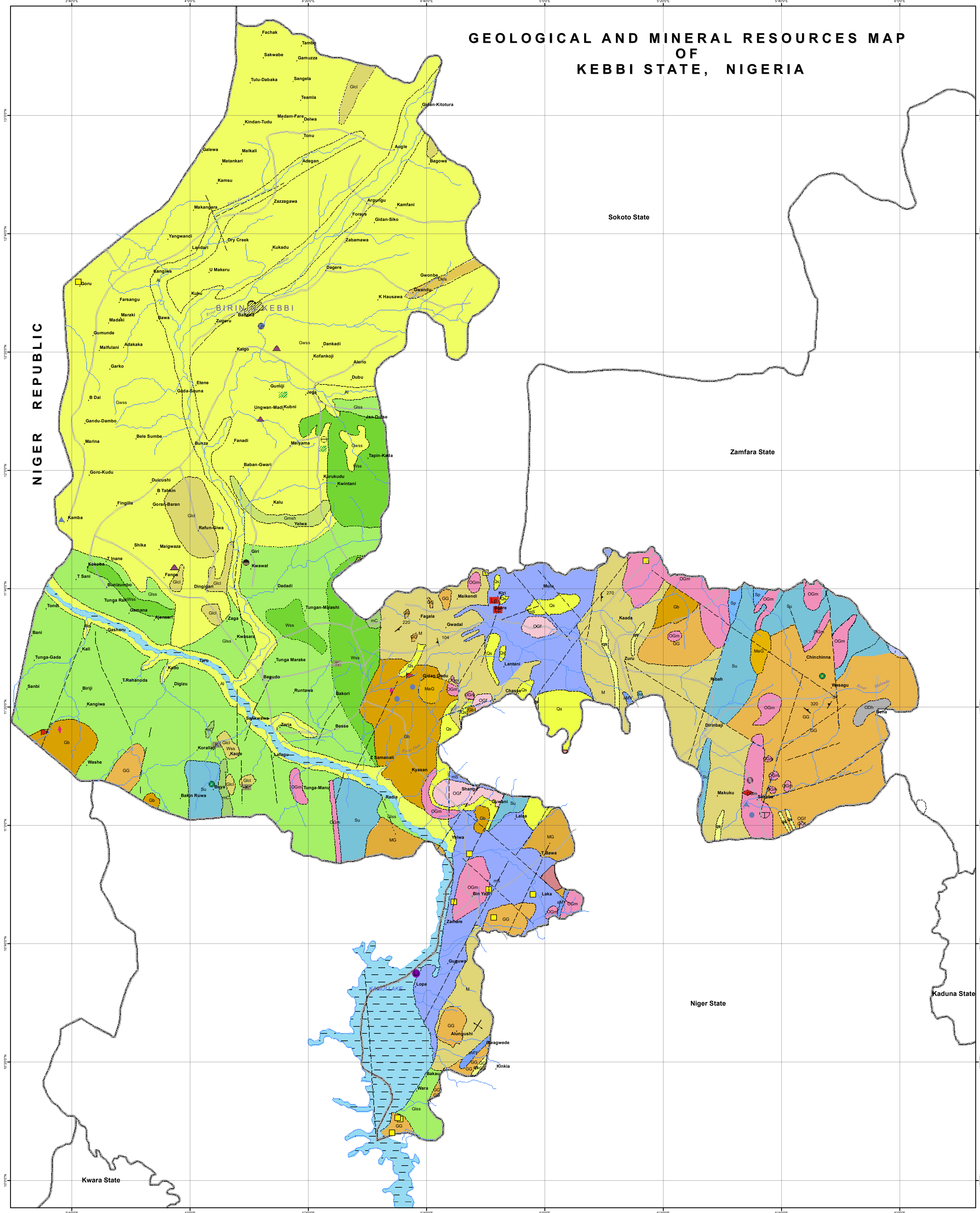
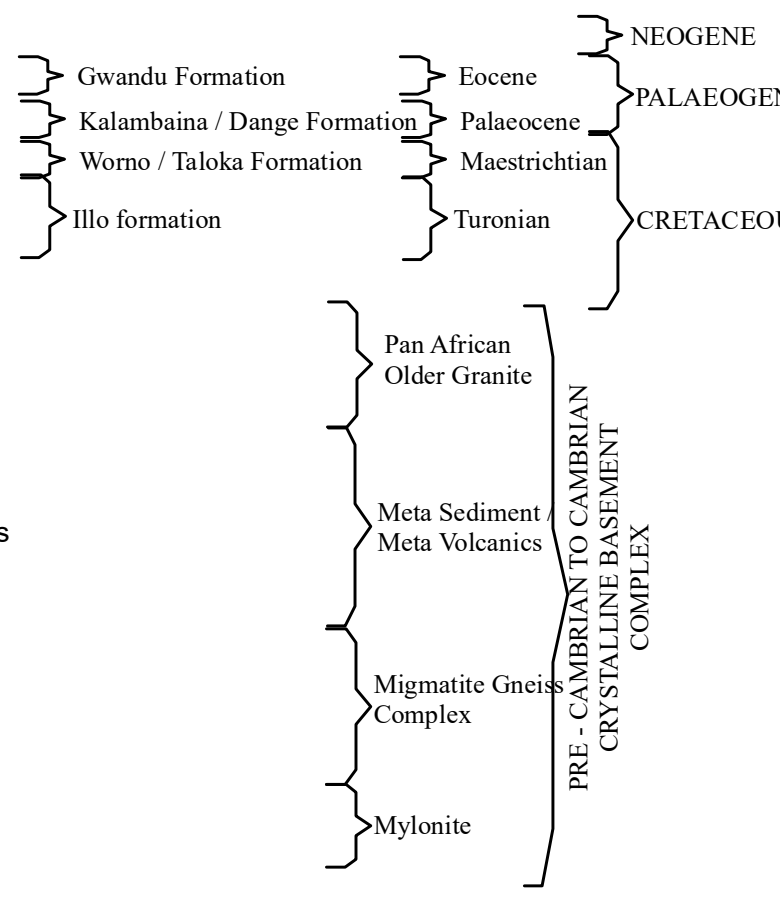


GEOLOGICAL AND MINERAL RESOURCES MAP OF KEBBI STATE, NIGERIA



EXPLANATIONS

- | | | | | | | | | | | | | | | | | | | | |
|---------------------------------|--------------------------------------|---------------------|----------------------------------|--------------------------------------|-----------|--|------------------------------|------------------|-----------------------------|----------------------|---|--|----------------|-----------|--------------|-------------------------|----------------|---|----------------|
| River Alluvium | Sandstones, Ironstones and Laterites | Limestone and Shale | Sandstones, Siltstones and Clays | Gld | Diorite | Medium coarse grained and biotite-hornblende granite | Fine grained biotite granite | Metaconglomerate | Quartzite and Quartz Schist | Quartz - mica schist | Slate, phyllite, metasiltstone locally hornfelsic or carbonaceous | Undifferentiated Schist, including some gneiss | Granite gneiss | Migmatite | Augen gneiss | Migmatic Granite Gneiss | Biotite Gneiss | Silicified sheared rocks and quartz veins | Mylonite Rocks |
| Geological boundary approximate | Geological boundary inferred | Major Fault | Fracture / Fault Inferred | Fault inferred from aeromagnetic map | Limestone | Phosphate | Kaolin | Bauxitic Clay | Talc | Feldspar | Mica | Manganese | Tantalite | Iron | Amethyst | Tourmaline | Gemstone | Gold | |



- ### New Commodity
- Goethite
 - Gold
 - Kunzite
 - Lepidolite
 - Uranium



PUBLISHED BY THE
AUTHORITY OF THE FEDERAL REPUBLIC OF NIGERIA
ABDULRAZAQ A. GARBA *Pd., FGS, FNGS*
Director General

