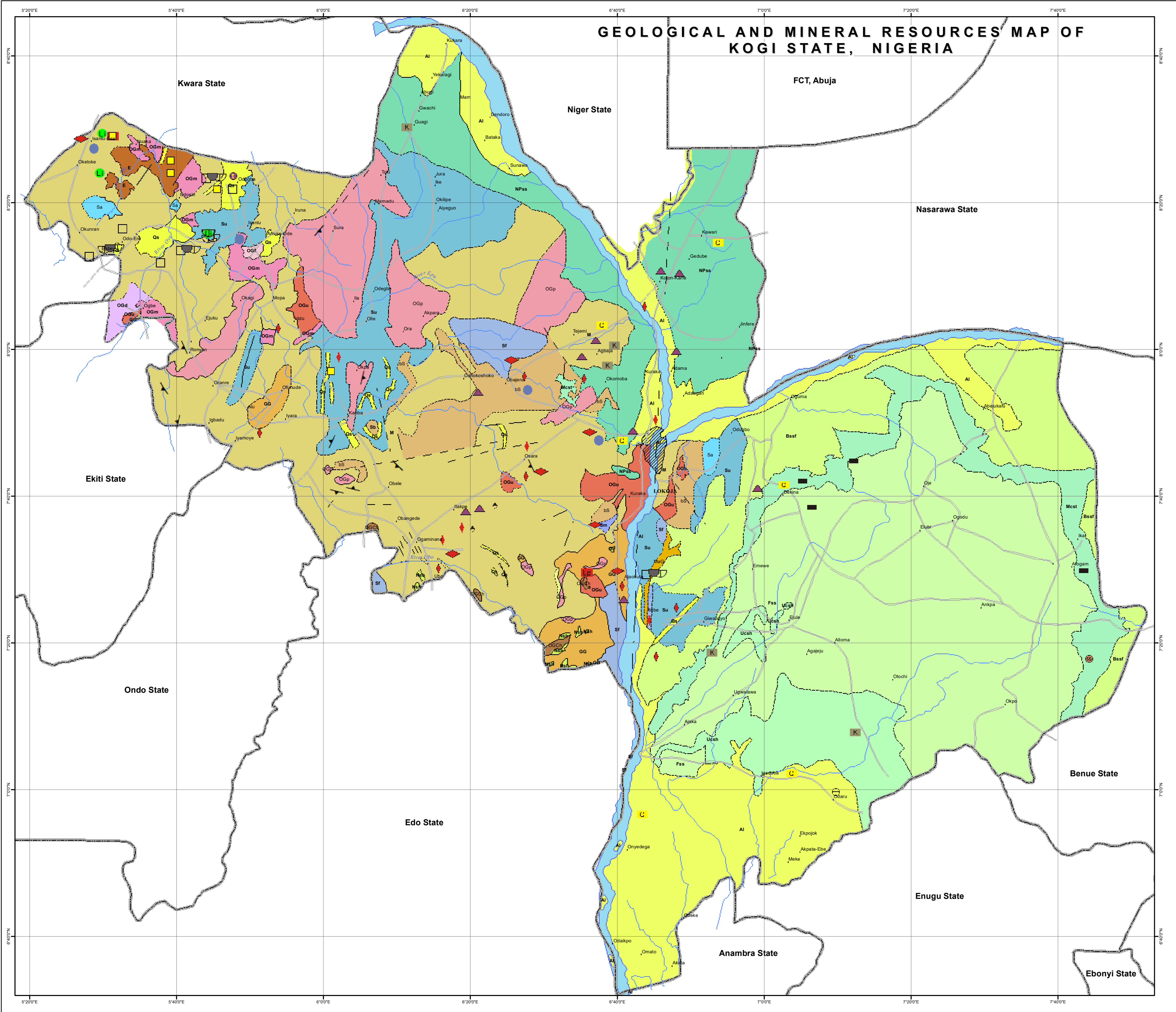
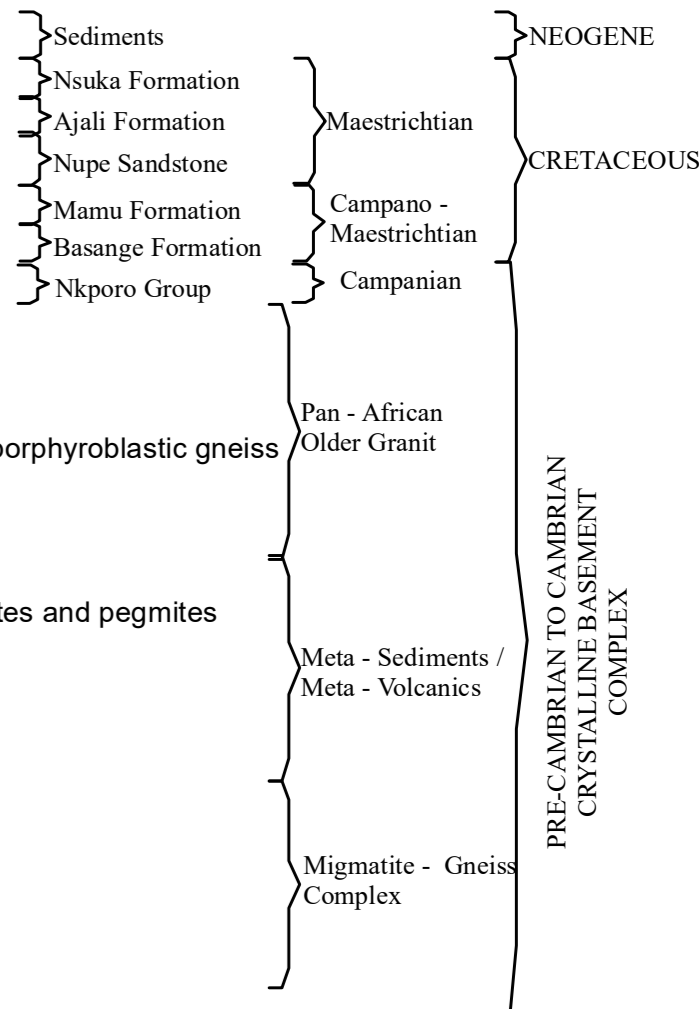


GEOLOGICAL AND MINERAL RESOURCES MAP OF KOGI STATE, NIGERIA



EXPLANATIONS

- AI Alluvium
 - Uchh Coal, shale, sandstone
 - Fss Coal, shale, sandstone
 - NPss False bedded sandstone
 - Mest Feldspathic sandstone and siltstone
 - Bssf Coal, sandstone and shale
 - Nsh Sandstone and ironstone
 - OGf Mudstone and shale
 - OGe Fine grained biotite granite
 - OGu Medium to coarse-grained biotite granite
 - OGr Undifferentiated older granite, mainly porphyroblastic granite with porphyroblastic gneiss
 - E Charnockitic rock
 - OGp Gabbro and quartz gabbro including epidiorite
 - Su Coarse grained porphyritic biotite and biotite hornblende granite
 - Sf Undifferentiated schist, including gneiss, fine grained flaggy quartzites and pegmites
 - GS Fine-grained, flaggy quartz biotite gneiss
 - ms Quartzite, quartz schist including flaggy quartzites
 - as Muscovite schists
 - bs Amphibolite
 - GG Biotite hornblende gneiss and schist
 - MAG Granite gneiss
 - bg Augen (porphyroplastic) gneiss
 - M Migmatite
 - qs Silicified sheared rock and quartz vein
- Geological boundary definite
 - - - Geological boundary approximate
 . . . Geological boundary inferred
 — Fracture/Faults
 - - - Fracture / Fault inferred
 | Strike and dip of bedding
 ▽ Strike and dip of vertical foliation
 — Structural trend lines



- Clay/Pottery clay
 - Fire clay
 - Brickclay
 - Kaolin/Kaolinitic clay
 - Gypsum
 - Talc
 - Mica
 - Marble
 - Quartz
 - Feldspar
 - Gypsum
 - Cassiterite
 - Tantalite
 - Columbite
 - Pyrite
 - Iron
 - Gold
 - Beryl
 - Tourmaline
 - Coal
- INDUSTRIAL MINERALS
 METALLIC MINERALS
 PRECIOUS MINERAL
 SEMI - PRECIOUS MINERALS
 ENERGY MINERAL

New Commodity

- Clay
- Feldspar
- Gold
- Kaolin
- Lepidolite
- Marble
- Morganite
- Silica sand
- Spodumene
- Tantalite



PUBLISHED BY THE
 AUTHORITY OF THE FEDERAL REPUBLIC OF NIGERIA
 ABDULRAZAQ A. GARBA P.H.D., FGS, FNMGS
 Director General

