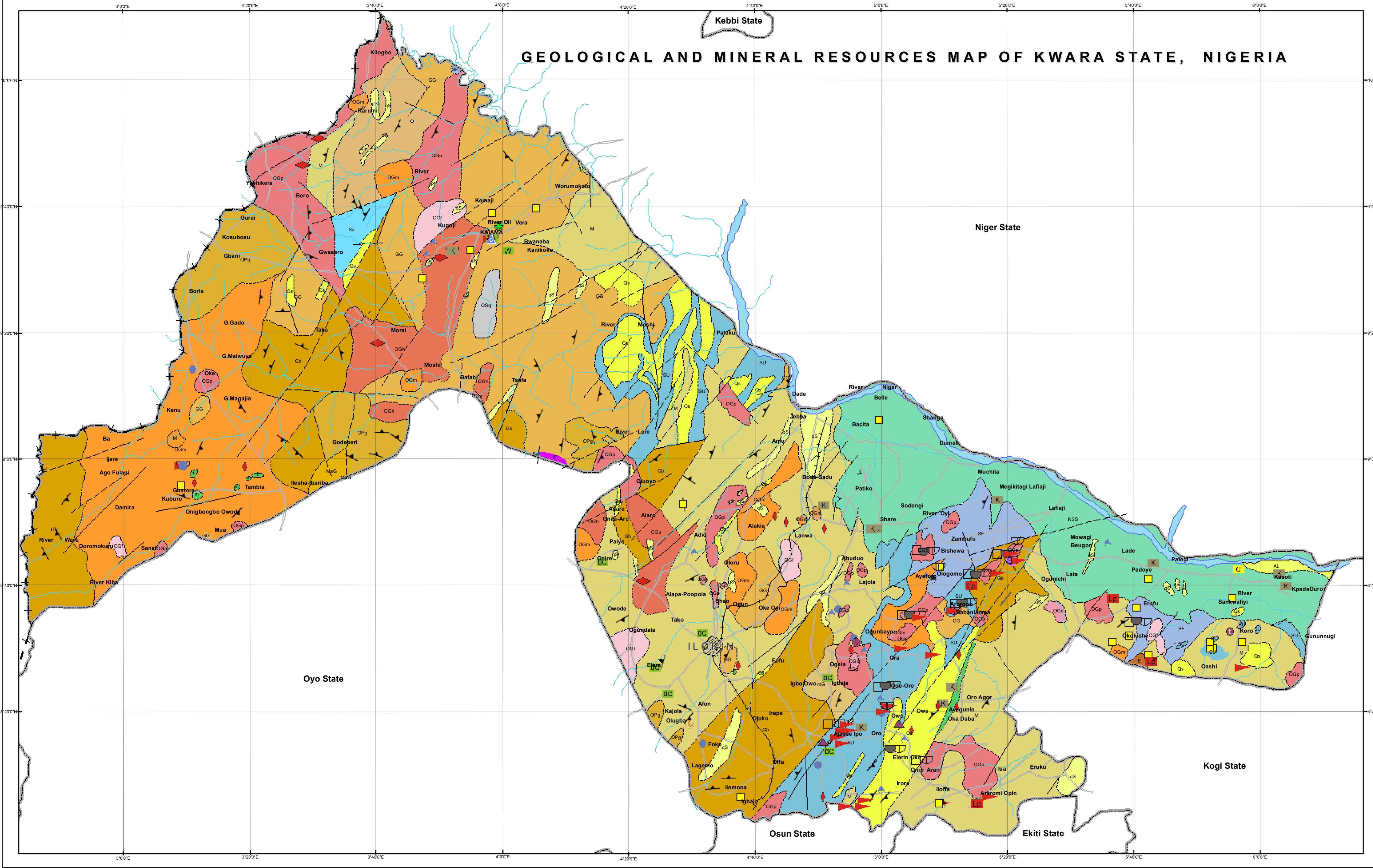


GEOLOGICAL AND MINERAL RESOURCES MAP OF KWARA STATE, NIGERIA



EXPLANATIONS

Al	River alluvium	Recent
NSS	Nupe sandstone	
OGd	Biotite and biotite hornblende granodiorite	Senonian
OSq	hornblende syenite	
OGf	Fine grained biotite granite	Older Granitoids
OGh	Hornblende biotite granite	
OGm	Medium to coarse grained biotite and hornblende granite	
OGp	Porphyritic granite (Porphyroblastic)	
OGu	Porphyritic granite including migmatitic gneiss	
E	Gabbro and quartz gabbro	PRECAMBRIAN TO CAMBRIAN CRYSTALLINE BASEMENT COMPLEX
Qs	Flaggy quartzite with biotite gneiss	
m	Marble	Meta - Sediments/ Meta - Volcanics
Sa	Amphibolite	
Sf	Fine grained flaggy quartz biotite gneiss	Gneiss - Migmatite Complex
Su	Undifferentiated schist	
bs	Garnetiferous gneiss and schist	
M	Migmatite	
MG	Migmatitic gneiss	
Gb	Banded gneiss	
OPg	Porphyroblastic gneiss	
MaG	Augen (porphyroblastic) gneiss	
GG	Granite gneiss	
qs	Silicified quartz including quartz vein	

NEW COMMODITY

---	Geological boundary approximate	METALLIC MINERALS
---	Geological Boundary Inferred	
---	Fracture / Fault.	PRECIOUS MINERAL
---	Fracture / Fault Inferred	
---	Strike and dip of vertical foliation..	SEMI - PRECIOUS MINERAL
---	Strike and Dip..	
---	Strike and Dip of bedding	INDUSTRIAL MINERALS

▲	Iron	
▲	Columbite	
▲	Tantalite	
▲	Wolframite	
▲	Cassiterite	
▲	Gold	
▲	Gemstone	
▲	Brick clay	
▲	Talc	
▲	Marble	
▲	Feldspar	
▲	Mica	
▲	Kaolinitic clay	
▲		

