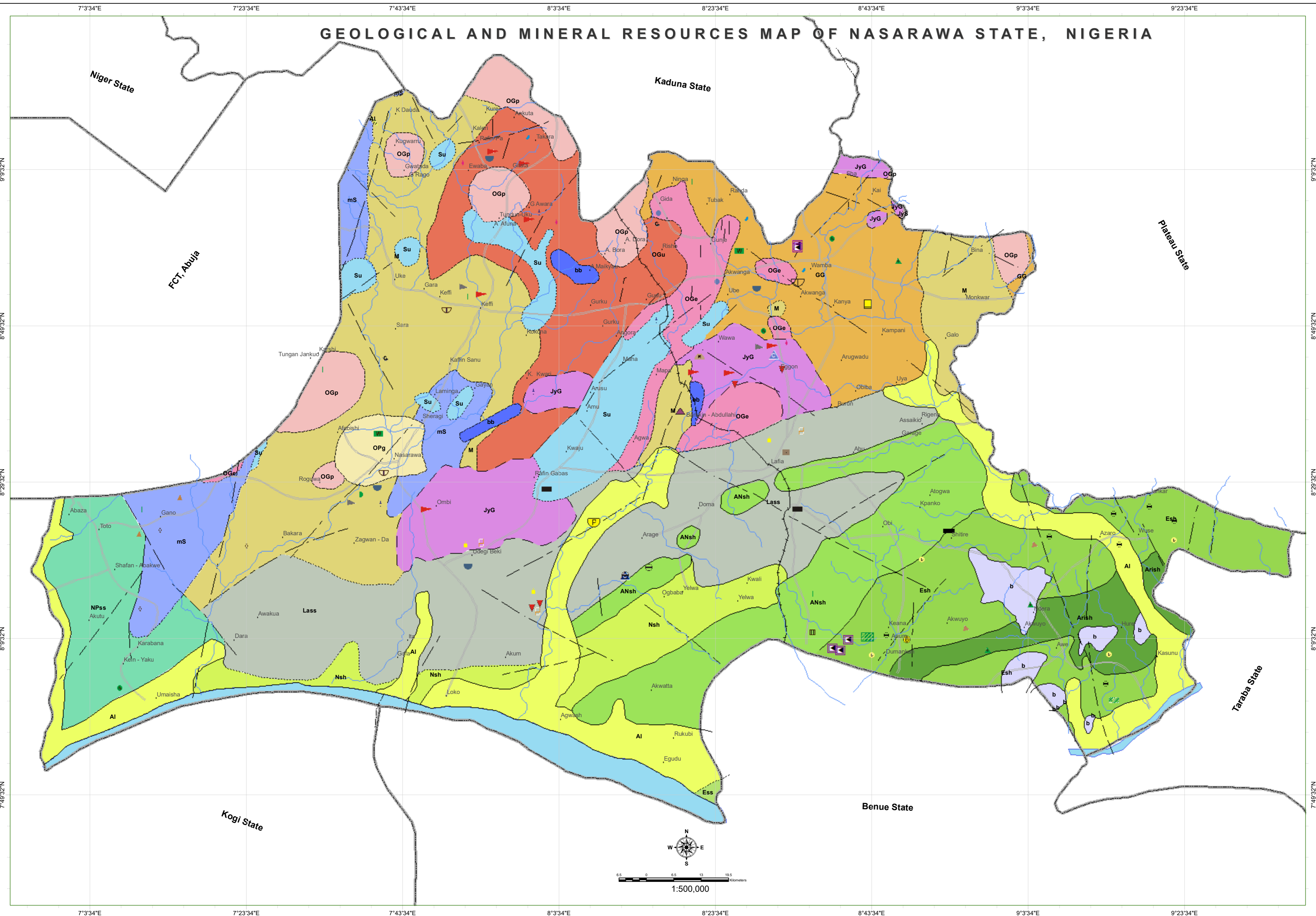


GEOLOGICAL AND MINERAL RESOURCES MAP OF NASARAWA STATE, NIGERIA



EXPLANATIONS

- | | | | |
|-------|---|--|--|
| Al | River Alluvium | Recent - Sediments | QUATERNARY |
| b | Basalts | | |
| bb | Older Basalts | Pre - Alkaline Volcanics | TERTIARY TO RECENT |
| JyG | Biotite Granite | | |
| JyS | Syenite, quartz syenite and gabbro | | |
| Nsh | Shales and mudstones | Nkporo shale group | CRETACEOUS |
| ANsh | Shales and Limestones | Jangwa Fm. - Turonian | |
| Ess | Sandstone | Ezeaku/Keana- Awe formation - Cenomanian | |
| Esh | Black shales, siltstones and sandstones | Lafia sandstone - Maestrichtian | PRECAMBRIAN TO RECENT BASEMENT COMPLEX |
| Lass | Sandstones, shale and sandy shale | Asu River group - Albian | |
| Arish | Shales and Limestones | Nupe sandstone - Maestrichtian | |
| Fss | Feldspathic sandstone and siltstone | | |
| OGe | Medium - Coarse grained biotite granite | | |
| OGp | Porphyritic Granite | | |
| OGu | Undifferentiated Older Granite | | |
| Su | Undifferentiated Schists | | |
| mS | Muscovite Schists | | |
| OPg | Porphyroblastic gneiss | | |
| GG | Granite gneiss | | |
| M | Migmatite | | |

- | | | |
|---|------------------------|-----------------------------|
| ⊖ | Baryte | INDUSTRIAL MINERALS |
| ⊕ | Marble | |
| ⊖ | Muscovite | METALLIC MINERALS |
| ⊕ | Limestone | |
| ⊖ | Mica | PRECIOUS MINERALS GEMSTONES |
| ⊕ | Glass-sand | |
| ⊖ | Columbite -cassiterite | EVAPORITE |
| ⊕ | Iron-ore | |
| ⊖ | Tantalite | INDUSTRIAL MINERALS |
| ⊕ | Tourmaline | |
| ⊖ | Beryl | METALLIC MINERALS |
| ⊕ | Aquamarine | |
| ⊖ | Topaz | PRECIOUS MINERALS GEMSTONES |
| ⊕ | Brine | |
| ⊖ | Coal | INDUSTRIAL MINERALS |
| ⊕ | Calcite | |
| ⊖ | Kaolin | METALLIC MINERALS |
| ⊕ | Graphite | |
| ⊖ | Fire-clay | PRECIOUS MINERALS GEMSTONES |
| ⊕ | Galena | |
| ⊖ | Lead-zinc | INDUSTRIAL MINERALS |
| ⊕ | Wolframite | |
| ⊖ | Zircon | PRECIOUS MINERALS GEMSTONES |
| ⊕ | Ruby | |

New Commodity

- | | |
|---|------------------|
| ⊖ | Baryte |
| ⊕ | Brine water |
| ⊖ | Coal |
| ⊕ | Copper |
| ⊖ | Gold |
| ⊕ | Iron ore |
| ⊖ | Lead/ Zinc |
| ⊕ | Limestone |
| ⊖ | Malachite |
| ⊕ | Pyrite |
| ⊖ | Tantalite |
| ⊕ | Tin/ Cassiterite |



NASARAWA STATE

PUBLISHED BY THE
 AUTHORITY OF THE FEDERAL REPUBLIC OF NIGERIA
 ABDULRAZAQ A. GARBA Ph.D., FGS, FNMGS
 Director General

