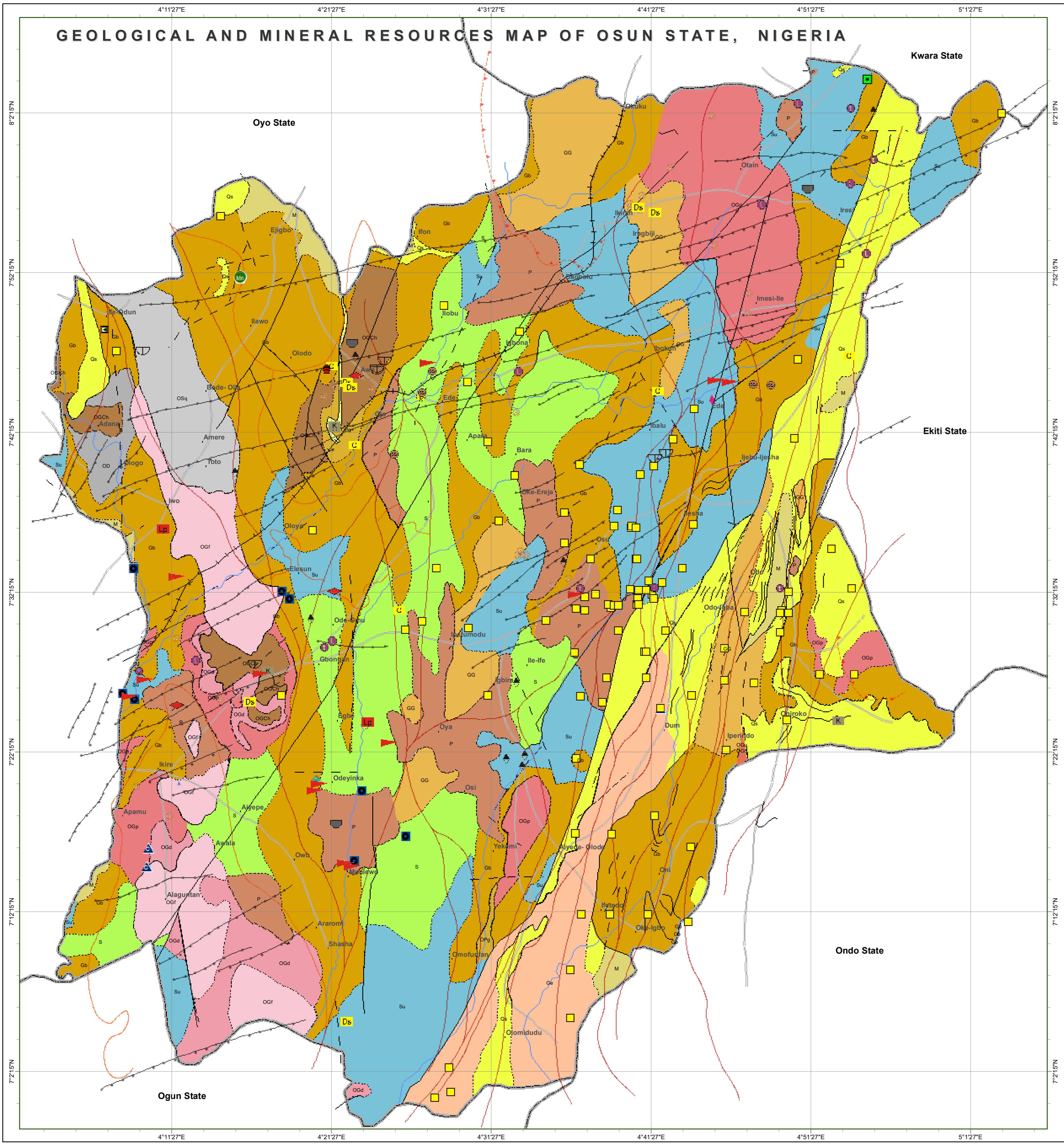


GEOLOGICAL AND MINERAL RESOURCES MAP OF OSUN STATE, NIGERIA



EXPLANATIONS

- | | | |
|--|--------------------------------|---|
| P Pegmatite | Pan-African (older) Granitoids | |
| OGd Granodiorite | | |
| OD Quartz Diorite | | |
| OGf Fine to medium grained biotite and biotite muscovite granite | | |
| OGp Porphyritic Granite | | |
| OSq Quartz-Syenite | | |
| OGu Undifferentiated older granite mainly porphyritic granite with some migmatite | | |
| OGCh Charnockitic Rocks | | |
| Qs Quartzites, flaggy quartzites, quartz schists, considerably sheared in parts | | Meta - sediments / Meta - Volcanic Series |
| Su Undifferentiated schist amphibolite, metavolcanics with pegmatites complex | | |
| S Schist | Migmatite - Gneiss Complex | |
| GG Granite Gneiss | | |
| Ge Quartzo-feldspathic granulite with gneiss | | |
| OPg Porphyroblastic Gneiss | | |
| Gb Banded Gneiss | | |
| qS Silicified sheared rocks and quartz veins | | |
| M Migmatite | | |

- | | | |
|--|--|---|
| <ul style="list-style-type: none"> --- Geological boundary approximate — Geological boundary definite Geological boundary inferred - - - Geological boundary transitional — Ifewara Fault - Fault/Fracture Approximate - - Fault/Fracture inferred — Structural trend lines ↖ Strike and Dip of foliation.. | Geophysical Structures <ul style="list-style-type: none"> ◆ Dyke — Shear zone-early — Shear zone-late — Shear zone-low angle thrust | New mineral location <ul style="list-style-type: none"> ◆ Amethyst ◆ Aquamarine ◆ Beryl ◆ Brine ◆ Cassiterite ◆ Clay ◆ Columbite ◆ Copper ◆ Emeralds ◆ Feldspar ◆ Gold ◆ Granite ◆ Kaolin - kaolinitic Clay ◆ Kaoline ◆ Manganese ◆ Niobium ◆ Sand ◆ Talc ◆ Tantalum ◆ Tourmaline ◆ Dimension Stone ◆ Lepidolite |
|--|--|---|

- | | |
|----------------------------|---------------------|
| C Clay/Pottery clay | INDUSTRIAL MINERALS |
| Gemstone | |
| Talc | PRECIOUS MINERAL |
| Gold | |



PUBLISHED BY THE
 AUTHORITY OF THE FEDERAL REPUBLIC OF NIGERIA
 ABDULRAZAQ A. GARBA *PhD., FGS, FNMS*
 Director General

