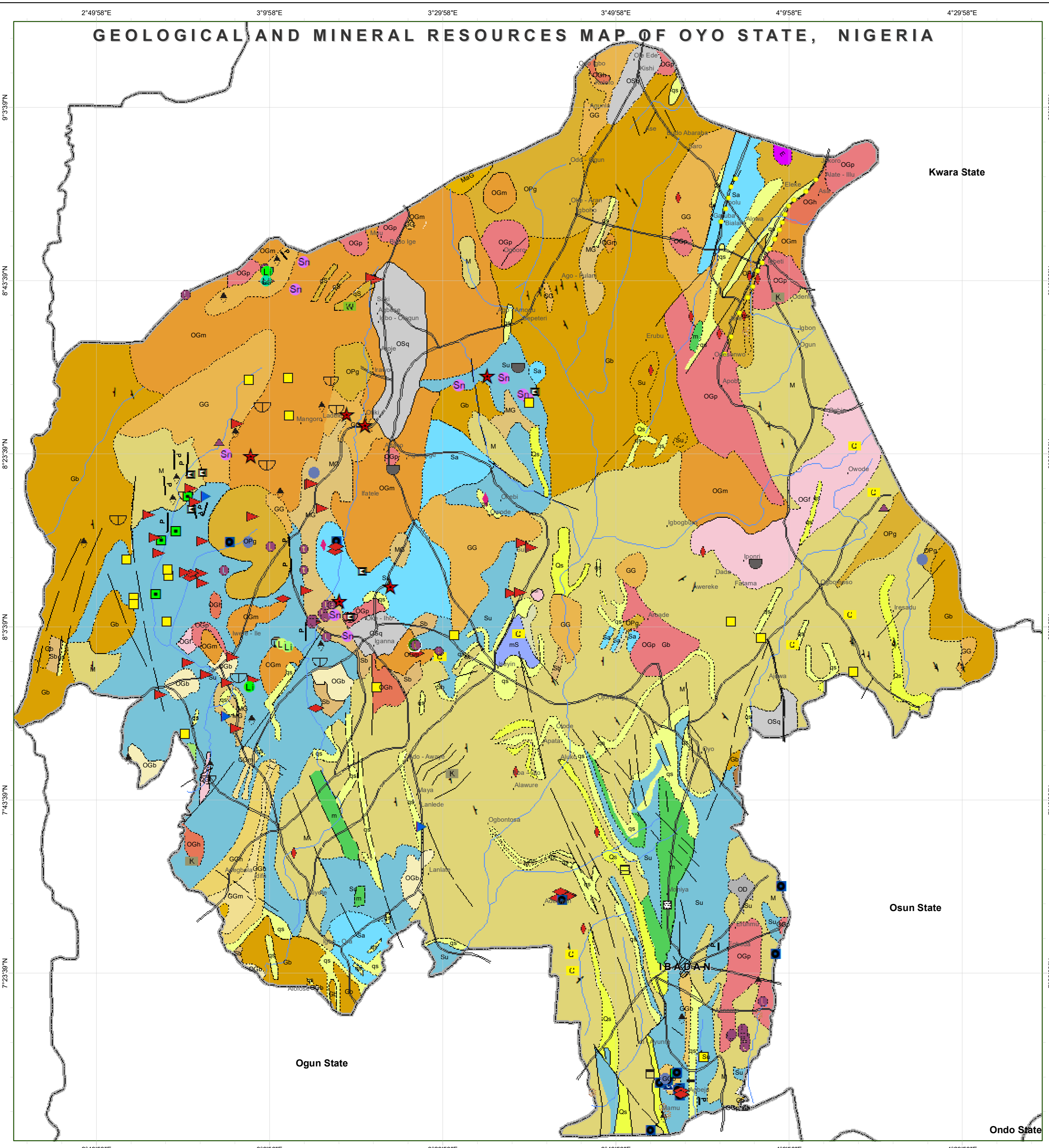


GEOLOGICAL AND MINERAL RESOURCES MAP OF OYO STATE, NIGERIA



EXPLANATIONS

- | | | |
|---|----------------------------------|---|
| P Pegmatite | Pan African Older Granite Series | |
| OGp Porphyritic granite | | |
| OGh Coarse porphyritic hornblende granite | | |
| OD Quartzite Diorite | | |
| E Gabbro and Quartz gabbro and meta intrusive | | |
| OGCh Charnockite | | |
| OGI Fine grained leucogranite | | Meta Sediments
Meta - Volcanics
Complex |
| OGf Fine and medium grained biotite | | |
| OGb Coarse - porphyritic biotite and biotite muscovite - granite | | |
| OGm Medium grained biotite and biotite hornblende - granite | | |
| OSq Syenite including pyroxene diorite | | |
| mS muscovite and muscovite schist | Migmatite Gneiss
Complex | |
| Su Undifferentiated schist and gneiss | | |
| tS Talc schist | | |
| Sa Amphibole schist | | |
| m Marble | | |
| Sb Biotite garnet gneiss and schist | | |
| OPg Porphyroblastic gneiss | | |
| M Migmatite | | |
| MG Migmatitic granite gneiss | | |
| GGm Muscovite and muscovite - tourmaline granite gneiss | | |
| GGb Biotite granite gneiss | | |
| GGh Hornblende granite gneiss | | |
| Gb Biotite, biotite hornblende gneiss | | |
| GG Granite gneiss | | |
| qS Silicified sheared rocks and quartz veins | | |

- Geological Boundary Inferred
- Geological Boundary Exact
- Geological Boundary Approximate
- Fracture / Faults
- Quartzite Ridges
- Roads
- River

- | | |
|------------------------------|---------------------------|
| S Sillimanite | INDUSTRIAL
MINERALS |
| M Marble | |
| C Clay / Pottery clay | |
| T Talc | METALLIC MINERAL |
| Ta Tantalite | |
| B Beryl | SEMI-PRECIOUS
MINERALS |
| Q Quartz / Amethyst | |

- ### Commodity
- | | |
|---------------------------------|----------------------|
| A Amethyst | GRANITE |
| Am Aquamarine | GRANITE (GNEISS) |
| B Beryl | IRON ORE |
| Bi Bismuth | LITHIUM |
| Cs Cassiterite | LITHIUM (KUNZITE) |
| Cl Clay | LITHIUM (LEPIDOLITE) |
| Co Columbite | LITHIUM (MOGANITE) |
| Cu Copper | LITHIUM (SPODUMENE) |
| Do Dolomite | MANGANESE |
| Fs Feldspar | |
| G Garnet | |
| Gm Gemstone | |
| Go Gold | |
| Ir Iron | |
| K Kaolin - kaolinic Clay | |
| Ka Kaoline | |
| M Marble | |
| Mi Mica | |
| N Niobium | |
| S Sapphire | |
| Si Sillimanite | |
| T Talc | |
| Ta Tantalite | |
| Sp Tin | |
| Tu Tourmaline | |
| TuB Tourmaline (blue) | |
| W Wolframite | |



PUBLISHED BY THE
 AUTHORITY OF THE FEDERAL REPUBLIC OF NIGERIA
 ABDULRAZAQ A. GARBA *PhD., FGS, FNMS*
 Director General

PRE-CAMBRIAN TO CAMBRIAN
CRYSTALLINE BASEMENT
COMPLEX