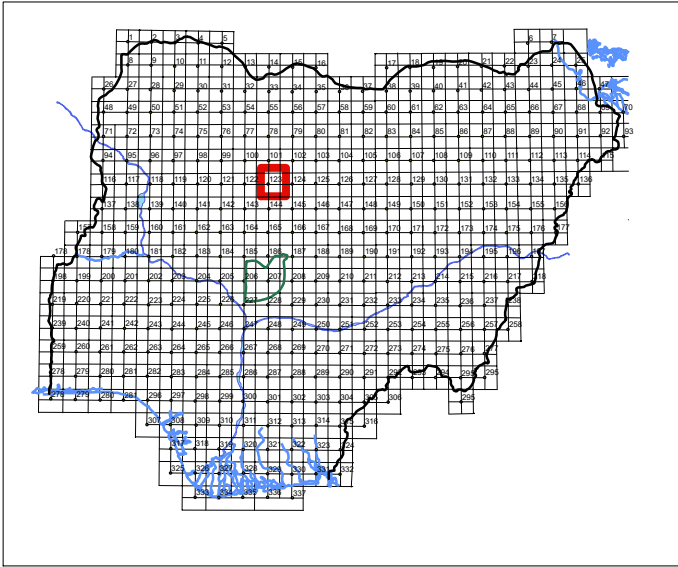


- Geology**
- OGd Diorite and granodioritic rocks
 - aS Amphibolite
 - mS Biotite, phyllitic and muscovite schist
 - bas Biotite-staurolite-kyanite schist and amphibolite
 - qs Silicified sheared rocks, large quartz
 - Su Schists and some gneiss
 - OGp Porphyritic older granite
 - OGm Medium-grained granitic
 - M Migmatites, migmatitic gneiss and banded gneiss
 - GG Granite gneiss
 - bs Garnetiferous-muscovite gneiss
- Meta-Sedimentary/
Meta-volcanic
- Migmatite gneiss
complex

- 32 Strike and Dip of Foliation
- Geological Boundary Inferred
- Lineament from Geophysical dataset
- Towns
- Roads
- Rivers
- ▨ Built up area

MAP INDEX



INDEX OF ADJOINING
1:100,000 SHEETS

120 KWARA	121 KADUNA	122 KADUNA	123 KADUNA
124 KADUNA	125 KADUNA	126 KADUNA	127 KADUNA

MAP HISTORY

The 1:100,000 Geological Series, a new publication, has emerged from the current NGSA initiative of geological mapping on the scale of 1:50,000. Four contiguous field sheets were merged into a half degree map.

Detailed mapping on 1:50,000 assisted by Landsat imagery interpretation was undertaken in 2008 by the Regional Geology Department of NGSA (N. E. Aji, Director).

Cartographic Designs & Data processing, including digitisation and re-map production, were undertaken by the Cartographic Unit/ Map Production Team of NGSA.

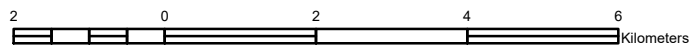


PUBLISHED UNDER THE AUTHORITY OF
THE FEDERAL GOVERNMENT OF NIGERIA

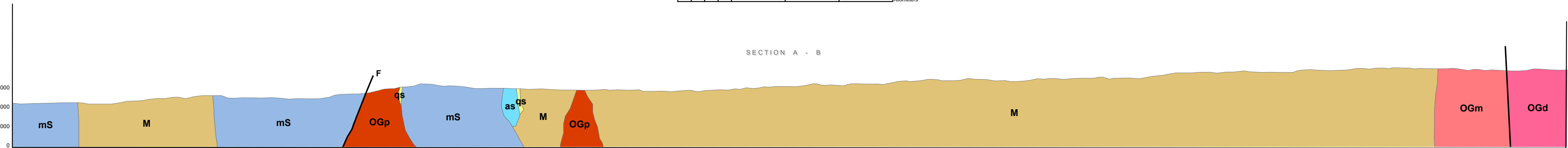
Professor Olusegun O. IGE, FNMGS
Director General
Nigerian Geological Survey Agency

1:100,000

First Edition



SECTION A - B



A

HORIZONTAL SCALE: 1 : 100,000
VERTICAL SCALE: 1 : 20,000

B