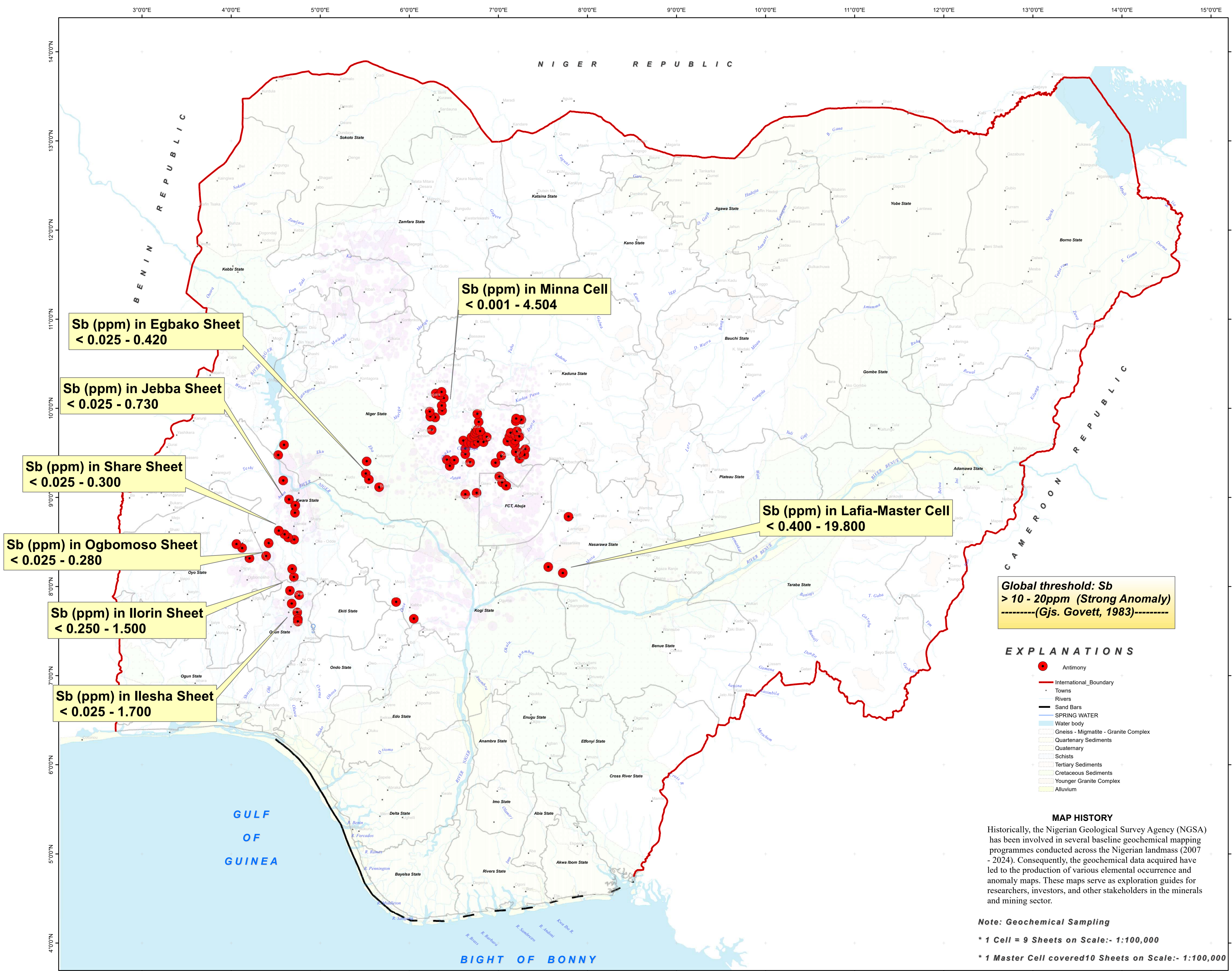
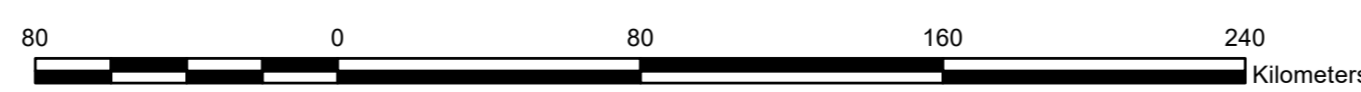
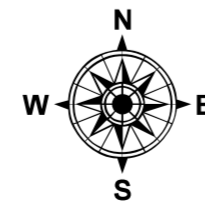


SPATIAL DISTRIBUTION & VARIABILITY OF SELECTED ANTIMONY CONCENTRATION IN NIGERIA



Copyright reserved@ Nigerian Geological Survey Agency, 2026



SCALE:- 1:2,000,000

PUBLISHED BY THE
 AUTHORITY OF THE FEDERAL REPUBLIC OF NIGERIA
 Prof. Olusegun O. IGE FNMGS.
 Director General



MAP HISTORY
 Historically, the Nigerian Geological Survey Agency (NGSA) has been involved in several baseline geochemical mapping programmes conducted across the Nigerian landmass (2007 - 2024). Consequently, the geochemical data acquired have led to the production of various elemental occurrence and anomaly maps. These maps serve as exploration guides for researchers, investors, and other stakeholders in the minerals and mining sector.

Note: Geochemical Sampling
 * 1 Cell = 9 Sheets on Scale:- 1:100,000
 * 1 Master Cell covered 10 Sheets on Scale:- 1:100,000