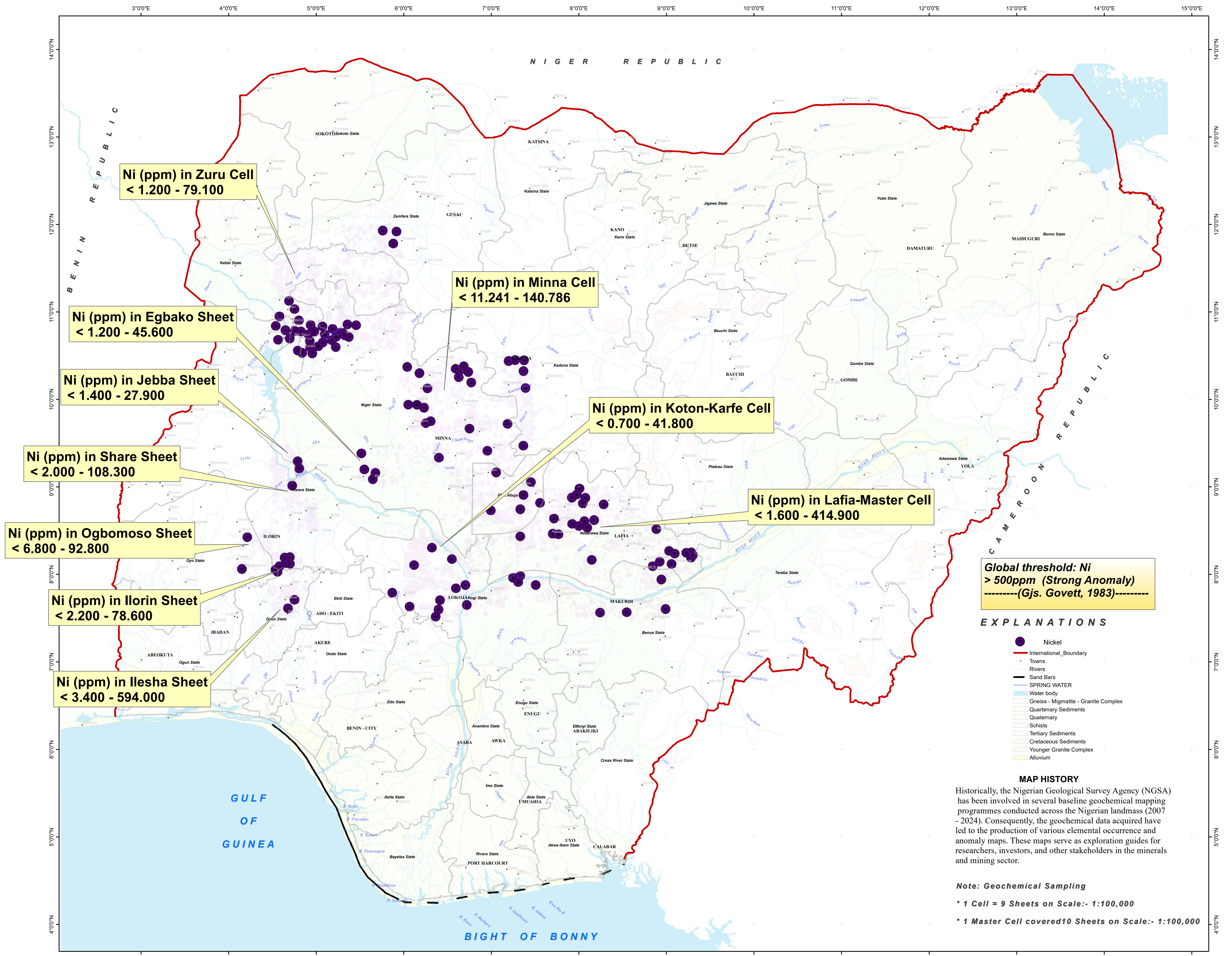


# SPATIAL DISTRIBUTION & VARIABILITY OF SELECTED NICKEL CONCENTRATION IN NIGERIA



**Global threshold: Ni > 500ppm (Strong Anomaly) (Gjs. Govett, 1983)**

### EXPLANATIONS

- Nickel
- International Boundary
- Towns
- Rivers
- Sand Bars
- SPRING WATER
- Water body
- Gneiss - Migmatite - Granite Complex
- Quaternary Sediments
- Quaternary
- Schists
- Tertiary Sediments
- Cretaceous Sediments
- Younger Granite Complex
- Alluvium

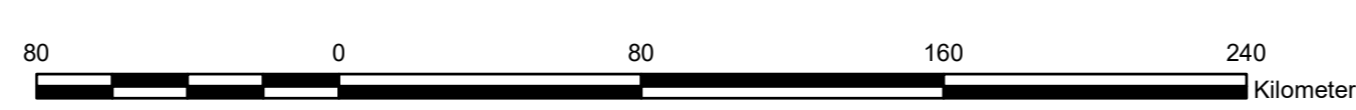
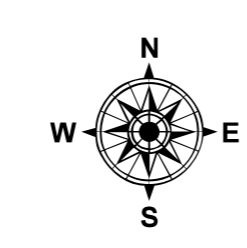
### MAP HISTORY

Historically, the Nigerian Geological Survey Agency (NGSA) has been involved in several baseline geochemical mapping programmes conducted across the Nigerian landmass (2007 - 2024). Consequently, the geochemical data acquired have led to the production of various elemental occurrence and anomaly maps. These maps serve as exploration guides for researchers, investors, and other stakeholders in the minerals and mining sector.

### Note: Geochemical Sampling

- \* 1 Cell = 9 Sheets on Scale:- 1:100,000
- \* 1 Master Cell = 10 Sheets on Scale:- 1:100,000

Copyright reserved@ Nigerian Geological Survey Agency, 2026



SCALE:- 1:2,000,000

PUBLISHED BY THE AUTHORITY OF THE FEDERAL REPUBLIC OF NIGERIA

Prof. Olusegun O. IGE *FNMGs.*  
Director General

